

Electrically controlled rotary actuators

- ✓ **Advantages:** • Mounting flange acc. to ISO 5211, • Manual emergency operation, • 2 additional limit switches
• Torque cut-off, • Variable voltage (DC or AC)
• Integrated heating in actuator housing

Description: Electric rotary actuator with optical position indicator, manual emergency operation and switch room heating. Two additional limit switches are installed for further control requirements. An electronic torque limiting unit prevents damage in the event of overload. The manual emergency operation can be done without dismantling the external cladding. Do not install upside down!

Materials: Housing: PA 6

Temperature range: -20°C to max. +70°C

Voltage: **Type 230:** 24 - 240V AC/DC (special ind. actuator: 85 - 240V AC/DC, sanitary actuator: 110 - 240V AC/DC), **Type 24:** 12 - 24V AC/DC (sanitary actuator: 24V AC/DC), (actuators can be powered with AC or DC voltage).

Protection class: IP 67 (sanitary and special industrial actuator: IP 65)

Power-on time: 75%

Installation position: Arbitrary, but not at the top

☞ **Optional (only for industrial actuator):** "Battery Safety Return" for emergency closing NC (standard configuration) or emergency opening NO (changeover using jumpers) in case of power failure **-BSR**

Type	Reg. time	Type	Reg. time	Wiring diagram			Working torque
230	sec.	24	sec.	for ball valve (ISO5211)	Square	Size	
Sanitary actuator							
ELS 230-1F03	16	ELS 24-1F03	19	F 03	9	1	10 Nm (12 Nm*)
ELS 230-1F05VK9	16	ELS 24-1F05VK9	19	F 05	9	1	10 Nm (12 Nm*)
ELS 230-1F05VK11	16	ELS 24-1F05VK11	19	F 05	11	1	10 Nm (12 Nm*)
ELS 230-1F05	16	ELS 24-1F05	19	F 05	14	1	10 Nm (12 Nm*)
Universal industrial actuator							
ELU 230-2F03	10	---	---	F 03	9	2	20 Nm (25 Nm*)
ELU 230-2F05VK9	10	---	---	F 05	9	2	20 Nm (25 Nm*)
ELU 230-2F05VK11	10	---	---	F 05	11	2	20 Nm (25 Nm*)
ELU 230-2F05	10	---	---	F 05	14	2	20 Nm (25 Nm*)
ELU 230-3F05VK11	10	---	---	F 05	11	3	35 Nm (38 Nm*)
ELU 230-3F05	10	---	---	F 05	14	3	35 Nm (38 Nm*)
ELU 230-4F05	14	---	---	F 05	14	4	55 Nm (60 Nm*)
ELU 230-4F05VK17	14	---	---	F 05	17	4	55 Nm (60 Nm*)
ELU 230-4F07VK14	14	---	---	F 07	14	4	55 Nm (60 Nm*)
ELU 230-4F07	14	---	---	F 07	17	4	55 Nm (60 Nm*)
ELU 230-5F07	30	---	---	F 07	17	5	85 Nm (90 Nm*)
Special industrial actuator							
ELi 230-2F03-140	140	ELi 24-2F03-140	140	F 03	9	2	20 Nm (25 Nm*)
ELi 230-2F05VK9-140	140	ELi 24-2F05VK9-140	140	F 05	9	2	20 Nm (25 Nm*)
ELi 230-2F05VK11-140	140	ELi 24-2F05VK11-140	140	F 05	11	2	20 Nm (25 Nm*)
ELi 230-2F05-140	140	ELi 24-2F05-140	140	F 05	14	2	20 Nm (25 Nm*)
ELi 230-6F10***	34	ELi 24-6F10***	34	F 10	22	6	140 Nm (170 Nm*)
ELi 230-7F10***	58	ELi 24-7F10***	58	F 10	22	7	300 Nm (350 Nm*)
Retrofit kit "Battery Safety Return" for emg. closing (NC)/emg. opening (NO) if there is a power failure**							
ELi BSR	---	ELi BSR	---	---	---	---	---

* max. torque (not for continuous operation), ** not for sizes 6 and 7, *** IP 67

☞ **Order example:** ELU 230-2F03 **

Standard type Designation for the options:
Battery Safety Return-BSR



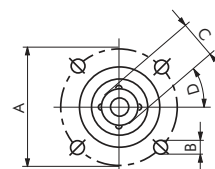
sanitary actuator



universal industrial actuator



special industrial actuator



ISO 5211 Dimensions
are found on page 310

Ball valves with time function

PN 16

Materials: Ball valve housing: Brass nickel-plated, ball: Stainless steel, ball seals: PTFE, actuator housing: Plastic

Temperature range: Medium: +1°C to max. +100°C, environment: +1°C to max. +50°C

Media: Compressed air and other neutral media

Power supply: 230V AC (clock and program are battery buffered)

Protection class: IP 54

Programming: Accurate to the minute, up to 16 switching cycles per day, each weekday individually programmable

Operation: Using timers (automatic), manual operation (timer switch) or manual operation (e.g. power failure). With ceiling installation, we recommend the use of remote controls.

- ✓ **Advantage:** Energy savings by automatically closing the compressed air line after work and automatically opening it before work starts

⚠ **Warning:** In case of high media temperatures, the actuator must be cooled!

Type	Thread	Regulating time	DN	Install. length ball valve
Ball valves with timer				
KH TIME 10	G 1"	30 sec.	25	88
KH TIME 20	G 2"	105 sec.	50	130
Remote control with 5 m cable				
KH TIME REMOTE				



type KH TIME 10



type KH TIME REMOTE



TIP Save energy with time-controlled automatic power disconnection