

Filler units (start-up valves w/ solenoid valves) Futura model series up to 8750 l/min

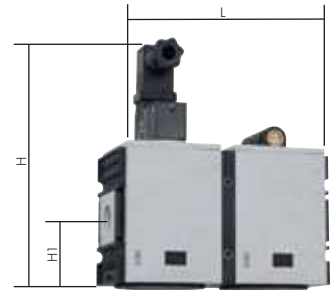
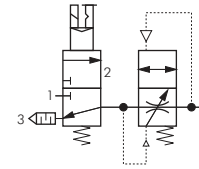
Input pressure: 2.5 - 10 bar

Function: The machines are allowed to breathe gradually via an orifice. Once the pressure attains a value of approx. 50% of the input pressure and the cylinders have gradually moved into their basic settings, the start-up valve switches over to maximum throughway. The speed of the pressure build-up can be controlled using an adjustment screw. It is turned on via a 3/2-way solenoid valve.

Supply volume: Filler unit incl. silencer

Type	Type	Thread	Flow	H	H1	L
24V DC	230V AC		l/min			
Model series 0						
BEFULL 014 F 24V=	BEFULL 014 F 230V	G 1/4"	1300	138	45	86
Model series 1						
BEFULL 14 F 24V=	BEFULL 14 F 230V	G 1/4"	1300	118	33	104
BEFULL 38 F 24V=	BEFULL 38 F 230V	G 3/8"	1300	118	33	104
Model series 2						
BEFULL 382 F 24V=	BEFULL 382 F 230V	G 3/8"	3400	150	57	126
BEFULL 12 F 24V=	BEFULL 12 F 230V	G 1/2"	3400	150	57	126
Model series 4						
BEFULL 34 F 24V=	BEFULL 34 F 230V	G 3/4"	8750	178	67	170
BEFULL 10 F 24V=	BEFULL 10 F 230V	G 1"	8750	178	67	170

Mounting bracket	Coupling kit
W 0 F	KP 0 F or KPW 0 F
W 1 F	KP 1 F or KPW 1 F
W 1 F	KP 1 F or KPW 1 F
W 2 F	KP 2 F or KPW 2 F
W 2 F	KP 2 F or KPW 2 F
W 4 F	KP 4 F or KPW 4 F
W 4 F	KP 4 F or KPW 4 F



Check valves Futura model series

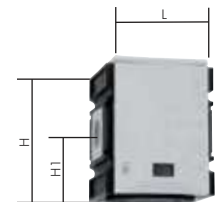
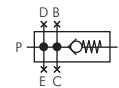
up to 4500 l/min

Input pressure: 0 - 16 bar (model series 0: 0 - 12 bar)

Connections: A = Output, B = Top, C = Front, E = Rear **ATEX:** Operating material without its own potential source of ignition in accordance with Directive 2014/34/EU (not model series 0)

Type	Thread steps (G)	Flow l/min
	Thread B C D E P-A P-B P-C P-D P-E	
Model series 0 (measurements: H = 66, H1 = 39, L = 43)		
R CL 014 F	G 1/4" --- 1/4" --- --- 750 --- 1000 --- ---	
Model series 1 (measurements: H = 67, H1 = 33, L = 52)		
R CL 14 F	G 1/4" --- --- --- 1/4" 1250 --- --- --- 700	
R CL 38 F	G 3/8" --- --- --- 1/4" 1250 --- --- --- 700	
Model series 2 (measurements: H = 81, H1 = 38, L = 63)		
R CL 382 F	G 3/8" 1/4" 1/2" 3/8" 3/8" 4500 830 830 1100 830	
R CL 12 F	G 1/2" 1/4" 1/2" 3/8" 3/8" 4500 830 830 1100 830	

Mounting bracket	Coupling kit
W 0 F	KP 0 F or KPW 0 F
W 1 F	KP 1 F or KPW 1 F
W 1 F	KP 1 F or KPW 1 F
W 2 F	KP 2 F or KPW 2 F
W 2 F	KP 2 F or KPW 2 F



Distributors Futura model series

up to 18000 l/min

Input pressure: 0 - 16 bar (model series 0: 0 - 12 bar)

Connections: A = Output, B = Top, C = Front, E = Rear **ATEX:** Operating material without its own potential source of ignition in accordance with Directive 2014/34/EU (not model series 0)

Type	Thread steps (G)	Flow l/min
	Thread B C D E P-A P-B P-C P-D P-E	
Model series 0 (measurements: H = 57, H1 = 28, L = 43)		
VB CL 014 F	G 1/4" 1/4" 1/4" --- --- 2700 2000 950 --- ---	
Model series 1 (measurements: H = 66, H1 = 33, L = 52)		
VB CL 14 F	G 1/4" 1/4" 1/4" 1/4" --- 2700 2000 2000 900 ---	
VB CL 38 F	G 3/8" 1/4" 1/4" 1/4" --- 3600 2000 2000 900 ---	
Model series 2 (measurements: H = 81, H1 = 38, L = 63)		
VB CL 382 F	G 3/8" 1/4" 1/2" 3/8" 3/8" 7250 2250 5500 2250 2250	
VB CL 12 F	G 1/2" 1/4" 1/2" 3/8" 3/8" 7250 2250 5500 2250 2250	
Model series 4 (measurements: H = 110, H1 = 51, L = 85)		
VB CL 34 F	G 3/4" 3/4" 3/4" --- --- 18000 8500 12000 --- ---	
VB CL 10 F	G 1" 3/4" 3/4" --- --- 18000 8500 12000 --- ---	

Mounting bracket	Coupling kit
W 0 F	KP 0 F or KPW 0 F
W 1 F	KP 1 F or KPW 1 F
W 1 F	KP 1 F or KPW 1 F
W 2 F	KP 2 F or KPW 2 F
W 2 F	KP 2 F or KPW 2 F
W 4 F	KP 4 F or KPW 4 F
W 4 F	KP 4 F or KPW 4 F

