

One-way control valves, cylindrical threads

Standard

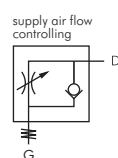
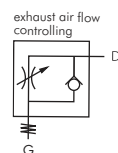
Materials: Body: Nickel-plated brass/PA 66, sleeve: PA 66, seal: NBR, holding claws: Stainless steel, cartridge: Zinc-plated ZnDC (only silicone-free seals and lubricants are used during assembly)

Temperature range: -20°C to max. +80°C

Operating pressure: -0.95 to 20 bar

- ✓ **Advantages:**
- Compact design
 - Can be easily adjusted without tools

Type exhaust air flow controlling	Type supply air flow controlling	G	D	Type exhaust air flow controlling	Type supply air flow controlling	G	D
GRAIQS M54	GRBQIS M54	M 5	4	GRAIQS 1410 G	GRBQIS 1410 G	G 1/4"	10
GRAIQS M56	GRBQIS M56	M 5	6	GRAIQS 386 G	GRBQIS 386 G	G 3/8"	6
GRAIQS 184 G	GRBQIS 184 G	G 1/8"	4	GRAIQS 388 G	GRBQIS 388 G	G 3/8"	8
GRAIQS 186 G	GRBQIS 186 G	G 1/8"	6	GRAIQS 3810 G	GRBQIS 3810 G	G 3/8"	10
GRAIQS 188 G	GRBQIS 188 G	G 1/8"	8	GRAIQS 3812 G	GRBQIS 3812 G	G 3/8"	12
GRAIQS 144 G	GRBQIS 144 G	G 1/4"	4	GRAIQS 128 G	GRBQIS 128 G	G 1/2"	8
GRAIQS 146 G	GRBQIS 146 G	G 1/4"	6	GRAIQS 1210 G	GRBQIS 1210 G	G 1/2"	10
GRAIQS 148 G	GRBQIS 148 G	G 1/4"	8	GRAIQS 1212 G	GRBQIS 1212 G	G 1/2"	12



One-way control valves with slotted screw

Standard

Materials: Body: Nickel-plated brass/PA 66, sleeve: PA 66, seal: NBR, holding claws: Stainless steel, cartridge: Zinc-plated ZnDC (only silicone-free seals and lubricants are used during assembly)

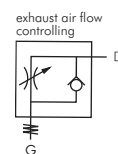
Temperature range: -20°C to max. +80°C

Operating pressure: -0.95 to 20 bar

- ✓ **Advantages:**
- Compact design
 - Can be easily adjusted without tools

Type exhaust air flow controlling	G	D	Type exhaust air flow controlling	G	D	Type exhaust air flow controlling	G	D
GRAIQS M54 S	M 5	4	GRAIQS 146 G S	G 1/4"	6	GRAIQS 3812 G S	G 3/8"	12
GRAIQS M56 S	M 5	6	GRAIQS 148 G S	G 1/4"	8	GRAIQS 128 G S	G 1/2"	8
GRAIQS 184 G S	G 1/8"	4	GRAIQS 1410 G S	G 1/4"	10	GRAIQS 1210 G S	G 1/2"	10
GRAIQS 186 G S	G 1/8"	6	GRAIQS 386 G S	G 3/8"	6	GRAIQS 1212 G S	G 1/2"	12
GRAIQS 188 G S	G 1/8"	8	GRAIQS 388 G S	G 3/8"	8			
GRAIQS 144 G S	G 1/4"	4	GRAIQS 3810 G S	G 3/8"	10			

Can only be adjusted using screwdriver



One-way control valves - straight form

Standard

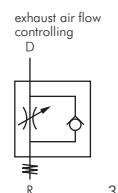
Materials: Body: Nickel-plated brass/PBT, seal: NBR, holding claw: Stainless steel, cartridge: Nickel-plated ZnDC, sleeve: PBT (only silicone-free seals and lubricants are used during assembly)

Operating pressure: -0.95 to 10 bar

Temperature range: 0°C to max. +60°C

- ✓ **Advantages:**
- Very compact design
 - Can be easily adjusted without tools

Type exhaust air flow controlling	R	D	Type exhaust air flow controlling	R	D	Type exhaust air flow controlling	R	D
GRAIQS M54	M 5	4	GRAIQS 188	R 1/8"	8	GRAIQS 388	R 3/8"	8
GRAIQS M56	M 5	6	GRAIQS 146	R 1/4"	6	GRAIQS 3810	R 3/8"	10
GRAIQS 184	R 1/8"	4	GRAIQS 148	R 1/4"	8	GRAIQS 1210	R 1/2"	10
GRAIQS 186	R 1/8"	6	GRAIQS 1410	R 1/4"	10	GRAIQS 1212	R 1/2"	12



Line one-way control valves

Standard/Mini

Materials: Body: Nickel-plated brass/PA 66, sleeve: PA 66, seal: NBR, holding claws: Stainless steel, cartridge: Zinc-plated ZnDC (only silicone-free seals and lubricants are used during assembly)

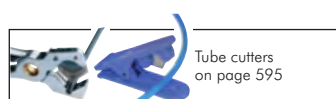
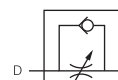
Temperature range: -20°C to max. +80°C

Operating pressure: -0.95 to 20 bar

- ✓ **Advantages:**
- Compact design
 - Can be easily adjusted without tools

Type	D	Type	D
IQSDRV 30*	3	IQSDRV 80	8
IQSDRV 40	4	IQSDRV 100	10
IQSDRV 60	6	IQSDRV 120	12

* mini design, 0°C to max. +60°C, -0.95 to 10 bar



Tube cutters on page 595



ACE Shock absorbers from page 502



FESTO Festo cylinders can be found in our Online Shop



FESTO Festo valves can be found in our Online Shop



One-way control valves made of nickel-plated brass from page 52



PU, PA, PTFE and PE hoses from page 192



Solenoid-valves from page 414



Cylinders from page 460

All data are considered to be unbinding reference values. We accept no liability for data selection that is not confirmed in writing. Pressure data refer, if not otherwise indicated, to liquids of Group II at +20°C.