

Precision pressure regulators



type FDRi 03



type FDRi 03-1

Remote controlled precision pressure regulators (volume boosters)

6500 l/min

Application: A remote controlled pressure regulator is used, when high flow rates are required with a constant pressure. The pressure regulator can also be used at inaccessible locations (e.g. in hazardous or ceiling areas). The setting is made using a pilot pressure regulator that can be placed anywhere. The regulated pressure corresponds to the pressure of the remote control bore and is maintained with high precision.

Version: Resettable (with large relieving system 3/8")

Materials: Body: Zinc die-casting Z410, diaphragms and seals: NBR

Temperature range: -35°C to max. +60°C

Input pressure: Max. 16 bar

Flow: 6500 l/min, relieving system: 800 l/min

Own air consumption: 1.7 l/min at 6 bar output pressure

Control accuracy: ± 2.5 mbar

Pressure gauge connection: G 1/4"

Media: Unoiled, finely filtered compressed air (5 μ m), non-toxic and non-flammable gases

ATEX: Operating material without its own potential source of ignition in accordance with Directive 2014/34/EU

- ✓ **Advantages:**
- Automatic venting in the event of overpressure on the secondary side through a large venting borehole (G 3/8") with up to 800 l/min
 - High flow at constant pressure.
 - Remote-controlled pressure regulation using pilot regulator (when using a precision pressure regulator as a pilot, it is possible to set the pressure very accurately).
 - Most precise pressure regulation regardless of the pre-pressure and flow performance
 - usable to -35°C

Type	Thread	L	H	H1	Pressure regula. range	Mounting bracket
Standard						
FDRi 03	G 1/2"	82	107	65.5	0.05 - 10 bar	BW 30
Special regulator with an adjustment knob for adjusting the offset up to +1 bar						
FDRi 03-1	G 1/2"	82	142	101	0.05 - 10 bar	BW 30



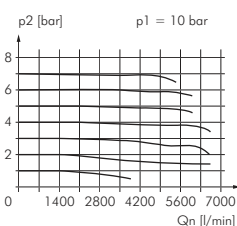
Recommendation: For best regulation results, please use the precision regulator with feedback connection Type DRF 31-7 FB



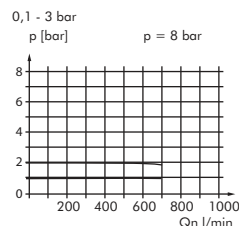
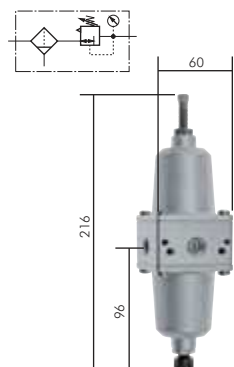
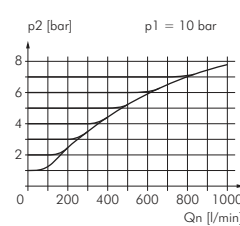
Suitable pressure gauges can be found on page 372.

FDRi 03 (0.05 - 10 bar)

flow



venting



Precision filter regulators

750 l/min

Application: Precision filter regulators are used to achieve an exact pressure - independently of the input pressure and the flow performance. They are used, for example, in control and regulation units in process engineering where a high level of pressure stability is required. The filter regulator can be used with "normal" filtered compressed air.

Version: Resettable (with relieving system)

Materials: Body: Zinc die-casting Z410, diaphragms and seals: NBR (non-ferrous metal free)

Temperature range: -10°C to max. +60°C

Input pressure: Max. 16 bar

Flow: 750 l/min, relieving system: 30 l/min

Own air consumption: 1 l/min

Control accuracy: ± 7.5 mbar

Pressure gauge connection: G 1/4"

Condensate draining: Manual, pore widths in filter: 10 μ m

Media: Oiled and unoiled compressed air, non-toxic and non-flammable gases

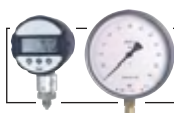
- ✓ **Advantages:**
- Automatic venting in the event of overpressure on the secondary side.
 - Precise pressure regulation regardless of the pre-pressure and flow performance
 - Robust design



Order accessories at the same time!

Suitable pressure gauges can be found on page 372.

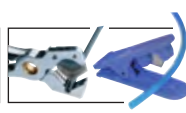
Type	Thread	Pressure regula. range	Wear part set	Mounting bracket
LRN 14-2	G 1/4"	0.1 - 2 bar	LRN 14-REP	W LRN
LRN 14-3	G 1/4"	0.1 - 3 bar	LRN 14-REP	W LRN
LRN 14-5	G 1/4"	0.2 - 5 bar	LRN 14-REP	W LRN



Digital and precision pressure gauge from page 381



Electronic pressure switches from page 391



Tube cutters on page 595



2/2, 3/2 directional valves of brass or stainless steel from page 404

All data are considered to be unbinding reference values. We accept no liability for data selection that is not confirmed in writing. Pressure data refer, if not otherwise indicated, to liquids of Group II at +20°C.