

IQS pressure regulators and stop cocks

1



Pressure regulators

Standard

Operating pressure: 0 - 9 bar

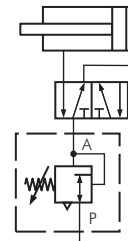
Setting pressure: 1 - 8 bar (pressure gauge display: 0.1 - 0.8 MPa)

Media: Compressed air, neutral gases

Function:

- If the primary pressure flows from P, reduced pressure escapes at the connection side.
- The compact construction with integrated quick connector permits a flexible assembly.
- The regulator is provided with overpressure protection, which especially simplifies the installation of pneumatic equipment.

Type without pressure gauge	Type with pressure gauge	P	A
Thread-hose			
LRIQS M54	LRMAIQS M54	M 5	4
LRIQS 184	LRMAIQS 184	R 1/8"	4
LRIQS 186	LRMAIQS 186	R 1/8"	6
LRIQS 146	LRMAIQS 146	R 1/4"	6
LRIQS 148	LRMAIQS 148	R 1/4"	8
Hose-hose			
LRIQS 40	LRMAIQS 40	4	4
LRIQS 60	LRMAIQS 60	6	6
LRIQS 80	LRMAIQS 80	8	8



Pre-pressure dependent differential pressure regulator

Standard

Operating pressure: 0 - 9 bar

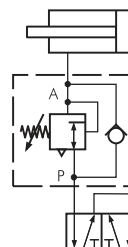
Setting pressure: 2 - 6 bar

Media: Compressed air, neutral gases

Function:

- If the primary pressure is applied from the thread side, reduced pressure appears on the connection side in accordance with the pressure difference. The compressed air can flow through a bypass in the opposing direction without a throttle. The pressure regulator can also be inserted behind a valve.

Type	P	A
LRLLIQS M54	M 5	4
LRLLIQS 184	R 1/8"	4
LRLLIQS 186	R 1/8"	6
LRLLIQS 146	R 1/4"	6
LRLLIQS 148	R 1/4"	8



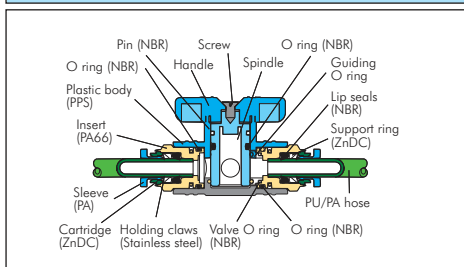
Sang-A



Dimensions can be found in the item details in our Online Shop!

IQS stop cocks (2/2-way)

Standard



Materials: Body: Nickel-plated brass/PPS, seal:

NBR, holding claw: Stainless steel, cartridge:

ZnDC/nickel-plated brass, sleeve: PA (only silicone-free seals and lubricants are used during assembly)

Operating pressure: -0.95 to 20 bar

Temperature range: 0°C to max. +80°C

Media: Compressed air, neutral media

Functional principle: The stop cocks shut off the airflow, thus separating the 2 systems from one another. No venting occurs.

✓ Advantages: • Very compact design

Stop cocks with cylindrical male threads and push in fitting

Standard

Type	G	D	Type	G	D	Type	G	D
IQSKH 186 G	G 1/8"	6	IQSKH 1410 G	G 1/4"	10	IQSKH 3810 G	G 3/8"	10
IQSKH 188 G	G 1/8"	8	IQSKH 1412 G	G 1/4"	12	IQSKH 3812 G	G 3/8"	12
IQSKH 146 G	G 1/4"	6	IQSKH 386 G	G 3/8"	6	IQSKH 1210 G	G 1/2"	10
IQSKH 148 G	G 1/4"	8	IQSKH 388 G	G 3/8"	8	IQSKH 1212 G	G 1/2"	12

Stop cocks with push in fitting

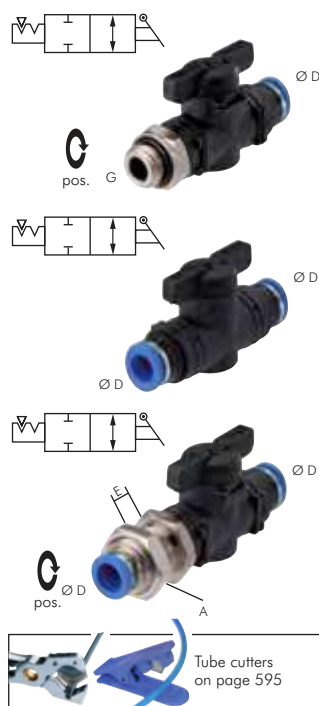
Standard

Type	D
IQSKH 60	6
IQSKH 80	8
IQSKH 100	10
IQSKH 120	12

Bulkhead stop cocks with push in fitting

Standard

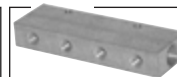
Type	D	A	E _{max}
IQSKHS 60	6	M 16 x 1	10
IQSKHS 80	8	M 16 x 1	10
IQSKHS 100	10	M 22 x 1	10
IQSKHS 120	12	M 22 x 1	10



Pressure regulator series FUTURA from page 322



PU, PA, PTFE and PE hoses from page 192



Distributor bars from page 132

All data are considered to be unbinding reference values. We accept no liability for data selection that is not confirmed in writing. Pressure data refer, if not otherwise indicated, to liquids of Group II at +20°C.