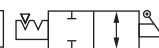


Angle stop cocks with cylindrical male threads and push in fitting

Standard

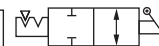
Type	G	D	Type	G	D	Type	G	D
IQSKHW 186 G	G 1/8"	6	IQSKHW 1410 G	G 1/4"	10	IQSKHW 3810 G	G 3/8"	10
IQSKHW 188 G	G 1/8"	8	IQSKHW 1412 G	G 1/4"	12	IQSKHW 3812 G	G 3/8"	12
IQSKHW 146 G	G 1/4"	6	IQSKHW 386 G	G 3/8"	6	IQSKHW 1210 G	G 1/2"	10
IQSKHW 148 G	G 1/4"	8	IQSKHW 388 G	G 3/8"	8	IQSKHW 1212 G	G 1/2"	12



Angle stop cocks with push in fitting

Standard

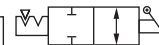
Type	D
IQSKHW 60	6
IQSKHW 80	8
IQSKHW 100	10
IQSKHW 120	12



Bulkhead angle stop cocks with push in fitting

Standard

Type	D	A	E _{max}
IQSKHSW 60	6	M 16 x 1	10
IQSKHSW 80	8	M 16 x 1	10
IQSKHSW 100	10	M 22 x 1	10
IQSKHSW 120	12	M 22 x 1	10



IQS stop cocks with venting (3/2-way)

Standard

Materials: Body: Nickel-plated brass/PA 66, sleeve: PA 66, seal: NBR, holding claws: Stainless steel, cartridge: Zinc-plated ZnDC (only silicone-free seals and lubricants are used during assembly)

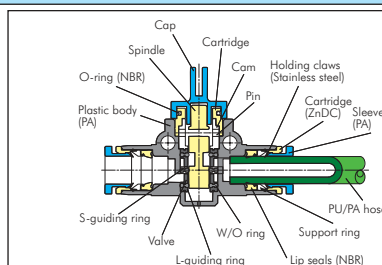
Temperature range: -20°C to max. +80°C

Operating pressure: -0.95 to 20 bar

Functional principle: The 3/2-way valves shut off the air flow and vent the secondary side.

Media: Compressed air, neutral gases

Application example: To control single-acting small cylinders or to shut off small pneumatic assemblies.



Sang-A

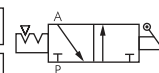
Dimensions can be found in the item details in our Online Shop!

✓ **Advantages:** • Very compact design

3/2-way valves with cylindrical male thread and push in fitting

Standard

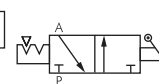
Type	Type	G	D
thread-side venting	hose-side venting		
IQSHA 3186 G	IQSHE 3186 G	G 1/8"	6
IQSHA 3188 G	IQSHE 3188 G	G 1/8"	8
IQSHA 3146 G	IQSHE 3146 G	G 1/4"	6
IQSHA 3148 G	IQSHE 3148 G	G 1/4"	8
IQSHA 31410 G	IQSHE 31410 G	G 1/4"	10
IQSHA 31412 G	IQSHE 31412 G	G 1/4"	12
IQSHA 3386 G	IQSHE 3386 G	G 3/8"	6
IQSHA 3388 G	IQSHE 3388 G	G 3/8"	8
IQSHA 33810 G	IQSHE 33810 G	G 3/8"	10
IQSHA 33812 G	IQSHE 33812 G	G 3/8"	12
IQSHA 31210 G	IQSHE 31210 G	G 1/2"	10
IQSHA 31212 G	IQSHE 31212 G	G 1/2"	12



3/2-way valves with push in fitting

Standard

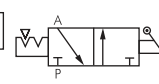
Type	D
IQSH 360	6
IQSH 380	8
IQSH 3100	10
IQSH 3120	12



3/2-way valves with cylindrical male thread

Standard

Type	G
IQSH 31818 G	G 1/8"
IQSH 31414 G	G 1/4"
IQSH 33838 G	G 3/8"
IQSH 31212 G	G 1/2"



Ball valves from page 280



Ball valves with venting from page 287



Festo screwed connections can be found in our Online Shop



Cylinders from page 460