

T push in connectors

FDA

| Type | D | Type | D |
|-------------|---|--------------|----|
| IQST 40 FDA | 4 | IQST 80 FDA | 8 |
| IQST 50 FDA | 5 | IQST 100 FDA | 10 |
| IQST 60 FDA | 6 | IQST 120 FDA | 12 |

Push in connectors, reducing, with push in nipple

FDA

| Type | D | D1 | Type | D | D1 |
|-----------------|----|----|------------------|----|----|
| IQSG 60H40 FDA | 6 | 4 | IQSG 120H80 FDA | 12 | 8 |
| IQSG 80H60 FDA | 8 | 6 | IQSG 120H100 FDA | 12 | 10 |
| IQSG 100H80 FDA | 10 | 8 | | | |

L push in connectors with push in nipple

FDA

| Type | D | Type | D |
|--------------|---|---------------|----|
| IQSL 40H FDA | 4 | IQSL 80H FDA | 8 |
| IQSL 50H FDA | 5 | IQSL 100H FDA | 10 |
| IQSL 60H FDA | 6 | IQSL 120H FDA | 12 |

Plugs for closing push in fittings

FDA

| Type | D | Type | D |
|--------------|---|---------------|----|
| IQSC 40H FDA | 4 | IQSC 80H FDA | 8 |
| IQSC 50H FDA | 5 | IQSC 100H FDA | 10 |
| IQSC 60H FDA | 6 | IQSC 120H FDA | 12 |

Multiple couplings

up to 15 bar

Application: For a quick and high safety standard coupling of several pneumatic hoses and multiple hoses.

Materials: Housing and plug plate: Technopolymer, seal: NBR, push in connectors: Brass

Temperature range: -20°C bis +70°C

Note: Plugs and sleeves can only be coupled together if they are the same size and same number of lines.

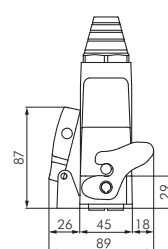
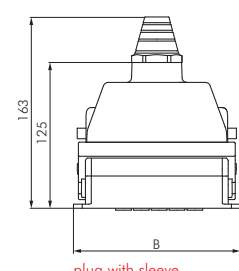
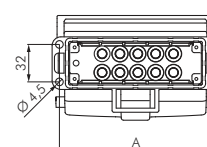
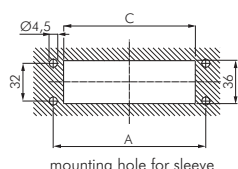
| Type complete plug + sleeve | Typ plug | Typ sleeve | A | B | C | size | Hose Ø external | Number of plugs |
|---------------------------------------|--------------|----------------|-----|-----|-----|------|-----------------|-----------------|
| Non-sealing, max. 15 bar | | | | | | | | |
| MFK 412 | MFK 412 ST | MFK 412 MU-S | 103 | 116 | 86 | 1 | 4 | 12 |
| MFK 420 | MFK 420 ST | MFK 420 MU-S | 130 | 143 | 113 | 2 | 4 | 20 |
| MFK 610 | MFK 610 ST | MFK 610 MU-S | 103 | 116 | 86 | 1 | 6 | 10 |
| MFK 614 | MFK 614 ST | MFK 614 MU-S | 130 | 143 | 113 | 2 | 6 | 14 |
| MFK 88 | MFK 88 ST | MFK 88 MU-S | 103 | 116 | 86 | 1 | 8 | 8 |
| MFK 810 | MFK 810 ST | MFK 810 MU-S | 130 | 143 | 113 | 2 | 8 | 10 |
| Both sides sealing, max. 7 bar | | | | | | | | |
| MFK 66 BA | MFK 66 ST BA | MFK 66 MU BA-S | 83 | 96 | 66 | 0 | 6 | 6 |
| MFK 84 BA | MFK 84 ST BA | MFK 84 MU BA-S | 83 | 96 | 66 | 0 | 8 | 4 |



| Replacement dust cover for plug | For size |
|---------------------------------|----------|
| MFK STAUB 0 | 0 |
| MFK STAUB 1 | 1 |
| MFK STAUB 2 | 2 |



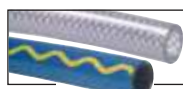
| Replacement O-Ring | For type |
|--------------------|----------------|
| MFK 4 OR | MFK 4... MU-S |
| MFK 6 OR | MFK 6... MU-S |
| MFK 8 OR | MFK 8... MU-S |
| MFK 6 OR BA | MFK 66 MU BA-S |
| MFK 8 OR BA | MFK 84 MU BA-S |



Stainless steel tube from page 253



Tube cutters on page 595



Compressed air and water hoses from page 208



PU, PA, PTFE and PE hoses from page 192