

Standard connectors for magnetic coils

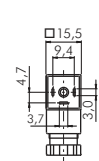
Description: Push-in connector according to DIN 43650/EN 175301-803 or industry standard. Solenoid valves are normally connected using industry standard plugs.

Voltage: Max. 250V AC/300V DC

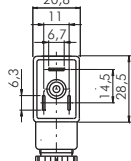
Supply volume: Plug including screw and flat seal (plug size 3: Profile seal)

Type black	Type grey	Plug size	Standard	N° of contacts + safety contacts	Height	Cable connection
Standard						
ST 00	---	0	Industry standard C	2	27	PG 7
ST 01	---	1	Industry standard B	2	31	M 16 x 1.5
ST 03	ST 03 G*	3	DIN/EN-A	2	28	M 16 x 1.5
ST 03 H	ST 03 HG	3	DIN/EN-A	2	35	M 16 x 1.5
ST 04	---	3	DIN/EN-A	3	28	M 16 x 1.5
With bridge rectifier, 250V AC/DC						
ST 03 GL	---	3	DIN/EN-A	2	36	M 16 x 1.5
Special model DIN 43650/EN 175301-803-B						
ST 01 B	---	1	DIN/EN-B	2	31	PG 9

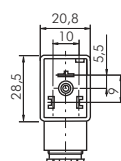
* cable connection PG 9



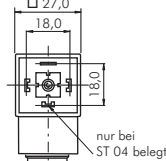
Plug size 0
(Industry standard C)



Plug size 1
(Industry standard B)



Plug size 1
(DIN/EN-B)



Plug size 3
(DIN/EN-A)



size 0



size 1



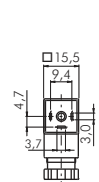
size 3

Standard connectors for magnetic coils (with protection circuits and LED displays)

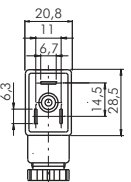
Description: Push-in connector with LED display according to DIN 43650/EN 175301-803 or industry standard. Solenoid valves are normally connected using industry standard plugs. The colour of the LED is yellow for 24V AC/DC types, red for 230V AC sort.

Supply volume: Plug including screw and flat seal (plug size 3: Profile seal)

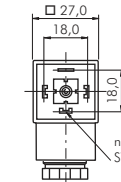
Type 24V AC/DC	Type 230V AC	Plug size	Standard	Dimensions	Cable connection
ST 00 LED 24V	ST 00 LED 230V	0	Industry standard C	15 x 15	PG 7
ST 01 LED 24V	ST 01 LED 230V	1	Industry standard B	20 x 30	M 16 x 1.5
ST 03 LED 24V	ST 03 LED 230V	3	DIN/EN-A	27 x 27	M 16 x 1.5



Plug size 0
(Industry standard C)



Plug size 1
(Industry standard B)



Plug size 3
(DIN/EN-A)



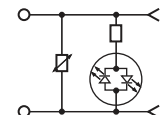
size 0



size 1



size 3



Replacement seals for standard connectors

Description: Elastomer seal for standard connector according to DIN 43650/EN 175301-803 or industry standard

Warning: Profile seals increase the plug outer dimensions by approx. 2 mm. We recommend checking the installation situation prior to use!

Type flat seal	Type profile seal	Suitable for plug size
ST 00 DICHT F	ST 00 DICHT P	0 (industry standard C)
ST 01 DICHT F	ST 01 DICHT P	1 (industry standard B)
ST 03 DICHT F	ST 03 DICHT P	3 (DIN/EN-A)



type flat seal
(Size 1)



type profile seal
(Size 1)

Light emitting seals for standard connectors

Application: The glowing seal is inserted between the standard connector and magnetic coil in place of the usual seal to display the switching status of the valve. It is equipped with reverse polarity protection and a protection circuit with a green LED. The LED is positioned right opposite the safety contact.

Type 12-24V AC/DC	Type 230V AC/DC*	Type 115V AC/DC	Suitable for plug size	Dimensions
LD ST00 24V	LD ST00 230V	LD ST00 115V*	0 (industry standard C)	15.5 x 15.5 x 1.9
LD ST01 24V	LD ST01 230V	LD ST01 115V	1 (industry standard B)	21.0 x 28.5 x 2.1
LD ST03 24V	LD ST03 230V	LD ST03 115V	3 (DIN/EN-A)	27.5 x 27.5 x 2.0

* without protection circuit



size 0



size 1



size 3

All data are considered to be unbinding reference values. We accept no liability for data selection that is not confirmed in writing. Pressure data refer, if not otherwise indicated, to liquids of Group II at +20°C.