

Axial hand lever valves Eco-Line

3/2-, 5/2-way axial hand lever valves

Model series VL10 - VL40

Materials: Body and slider: Aluminium, seals: NBR
 Temperature range: -5°C to max. +60°C
 Operating pressure: 0 - 8 bar
 Medium: Oiled and unoled filtered compressed air

3/2-way axial hand lever valves

Model series VL

| Type | Model series | Thread | Flow |
|--------------------|--------------|--------|-------------|
| With spring return | | | |
| L 321-06 S | VL10 | G 1/8" | 500 l/min. |
| L 322-08 S | VL20 | G 1/4" | 800 l/min. |
| L 324-15 S | VL40 | G 1/2" | 2250 l/min. |
| With detent | | | |
| L 321-06 | VL10 | G 1/8" | 500 l/min. |
| L 322-08 | VL20 | G 1/4" | 800 l/min. |
| L 324-15 | VL40 | G 1/2" | 2250 l/min. |

5/2-way axial hand lever valves

Model series VL

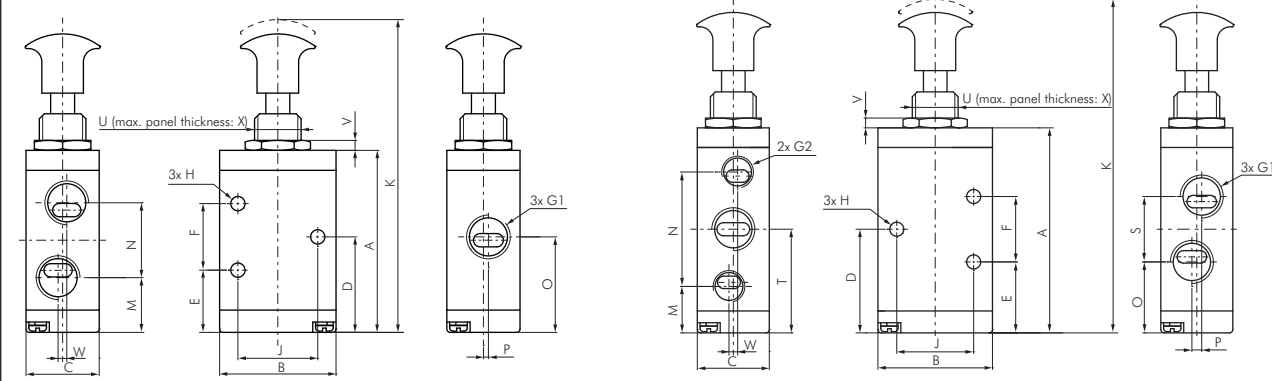
| Type | Model series | Thread | Flow |
|--------------------|--------------|-------------------------|-------------|
| With spring return | | | |
| L 521-06 S | VL10 | G 1/8" | 500 l/min. |
| L 522-08 S | VL20 | G 1/4" (exhaust G 1/8") | 800 l/min. |
| L 524-15 S | VL40 | G 1/2" | 2250 l/min. |
| With detent | | | |
| L 521-06 | VL10 | G 1/8" | 500 l/min. |
| L 522-08 | VL20 | G 1/4" (exhaust G 1/8") | 800 l/min. |
| L 524-15 | VL40 | G 1/2" | 2250 l/min. |

Dimensions 3/2- and 5/2-way axial hand lever valves

Model series VL10 - VL40

3/2-way axial hand lever valves

5/2-way axial hand lever valves



| Type | Model series | A | B | C | D | E | F | G1 | G2 | H | J | K | M | N | O | P | S | T | U | V | W | X |
|---------------|--------------|-------|----|----|------|------|----|--------|--------|-----|----|-----|------|------|------|-----|-----|------|------------|---|---|-----|
| 3/2-way valve | | | | | | | | | | | | | | | | | | | | | | |
| L 321-06 (S) | VL10 | 44.7 | 27 | 18 | 23.7 | 16.7 | 14 | G 1/8" | --- | 3.1 | 19 | 85 | 14.7 | 16 | 23.7 | 1 | --- | --- | M 14 x 1 | 3 | 2 | 8 |
| L 322-08 (S) | VL20 | 54.7 | 35 | 22 | 28.7 | 18.7 | 20 | G 1/4" | --- | 4.3 | 24 | 94 | 16.5 | 22.5 | 28.7 | 1.5 | --- | --- | M 14 x 1 | 3 | 0 | 8 |
| L 324-15 (S) | VL40 | 87.5 | 50 | 34 | 45 | 31 | 28 | G 1/2" | --- | 5.5 | 36 | 141 | 29.3 | 31.5 | 45 | 2 | --- | --- | M 22 x 1.5 | 5 | 0 | 9.5 |
| 5/2-way valve | | | | | | | | | | | | | | | | | | | | | | |
| L 521-06 (S) | VL10 | 55.7 | 27 | 18 | 28.2 | 21.2 | 14 | G 1/8" | G 1/8" | 3.3 | 19 | 96 | 14.2 | 28 | 20.2 | 3 | 16 | 28.2 | M 14 x 1 | 3 | 2 | 8 |
| L 522-08 (S) | VL20 | 62.7 | 35 | 22 | 31.7 | 21.7 | 20 | G 1/4" | G 1/8" | 4.3 | 24 | 102 | 14.2 | 35 | 21.7 | 3 | 20 | 31.7 | M 14 x 1 | 3 | 0 | 8 |
| L 524-15 (S) | VL40 | 111.5 | 50 | 34 | 57 | 43 | 28 | G 1/2" | G 1/2" | 5.5 | 36 | 165 | 25.5 | 63 | 39 | 4 | 36 | 57 | M 22 x 1.5 | 5 | 0 | 9.5 |



Push-in fittings
 Ø 4 - 32 mm
 from page 24



One-way
 control valves
 from page 440



Threaded fittings
 from page 102



Cylinder
 from page 460

All data are considered to be unbinding reference values. We accept no liability for data selection that is not confirmed in writing. Pressure data refer, if not otherwise indicated, to liquids of Group II at +20°C.