

Two-hand safety blocks

Materials: Body: Aluminium anodised, internal parts: Aluminium, brass and stainless steel, seals: Plastic and NBR

Temperature range: -10°C to max. +70°C (standard design: -10°C to max. +60°C)

Media: Oiled and unoled filtered compressed air

Pressure input: Connection P (type SZ 18 310 B: air supply via control signals)

Function SZ: The valve switches when two input signals Z 1 and Z 2 are received within a span of 0.5 sec. On deleting one or both the signals, the piston is reset. The valve does not switch if the input signals are not received within 0.5 sec. To restart, both the signals must be deleted first.

Application SZ: For machines and devices that must be turned on using both hands (e.g. presses). Cylinders up to Ø 160 can be operated directly using valve SZ 14 510 or SZS 14 510.

Function SZS: In addition to the two signal inlets Z 1 and Z 2, this two hand control block also has the signal connection Y. Signal to Y switches the two hand control block like a normal 5/2-way valve.

Application SZS:

1. For machines and equipment that need to be turned on using both hands, however shortly before stroke-end switch to "detend". Both manual buttons can already be released before the stroke-end. Detend is turned on by the limit switch (signal to Y), and released by a time valve or pressure switch.

2. For machines and equipment that optionally can be turned on with both hands or one hand, or by means of a foot switch.

Type	Thread	Nominal width	Flow	Operating pressure	Control pressure*	Control conn. 14 - 12
3/2-way (NC) precision design						
SZ 18 310	G 1/8"	4 mm	280 l/min.	3 - 10 bar	3 - 10 bar	G 1/8"
3/2-way (NC) standard design						
SZ 18 310 B	G 1/8"	2 mm	100 l/min.	3 - 8 bar	3 - 8 bar	G 1/8"
5/2-way						
SZ 14 510	G 1/4"	8 mm	1,300 l/min.	3 - 10 bar	3 - 10 bar	G 1/8"
5/2-way with detend connection (Y)						
SZS 14 510	G 1/4"	8 mm	1,300 l/min.	3 - 10 bar	3 - 10 bar	G 1/8"

* depends on working pressure

3/2-way servo key return switches with "low actuating force"

Materials: Body: Aluminium anodised, internal parts: Aluminium, brass and stainless steel, seal: Plastic/NBR

Temperature range: -10°C to max. +70°C

Construction type and function:

- Pilot operated piston valve with low actuating force. If not activated, a small air quantity of approx. 2.5 l/min escapes from the pilot part.
- Pressure connection always at 1, outlet at 2, venting through a borehole on the surface of the valve.
- The surface within the four bases of the valve may not be covered.
- At actuation the valve switches from throughway 1 to 2.

Application:

- For turning on machines and equipment of all types, especially in pairs as two-hand indenting. With the small switch force of the Servo principle, a fatigue proof working is guaranteed in the continuous operation. The bracket around the button protects against accidental actuation.

Type	Thread	Nominal width	Flow	Operating pressure	Switch force at 6 bar	Basic setting
ST 18 310	G 1/8"	3 mm	220 l/min.	3 - 10 bar	3.5 N	Closed

Signal interrupters

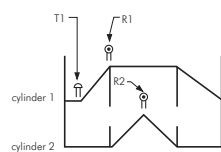
Materials: Body: Aluminium anodised, internal parts: Aluminium and stainless steel (standard design: brass), seals: Plastic and NBR

Temperature range: -10°C to max. +70°C (standard design: -10°C to max. +60°C)

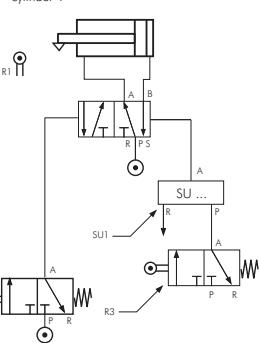
Media: Oiled and unoled compressed air

Function: This valve intercepts a continuous signal, so that the continuous signal at the input connection 1 generates only a short pulse at the outlet 2. A signal received at 1 flows to the outlet 2. After the pulse, the pressure generated in the valve switches over the piston. Connection 1 is blocked, outlet 2 vents after 3.

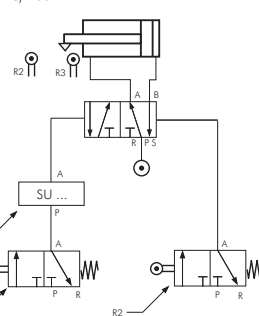
Type	Thread	Pulse length	Operating pressure
Precision design			
SU 25 310	M 5	Approx. 0.3 sec.	3 - 10 bar
SU 18 310	G 1/8"	Approx. 0.3 sec.	3 - 10 bar
Standard design			
SU 18 310 B	G 1/8"	0 - 10 sec. (adjustable)	2 - 10 bar



cylinder 1



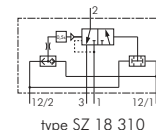
cylinder 2



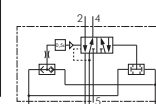
standard design



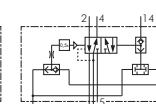
precision design



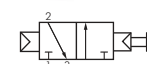
type SZ 18 310



type SZ 14 510

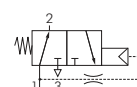


type SZS 14 510



precision design

standard design



Push-in fittings
Ø 3 - 32 mm
from page 24

All data are considered to be unbinding reference values. We accept no liability for data selection that is not confirmed in writing. Pressure data refer, if not otherwise indicated, to liquids of Group II at +20°C.