

One-way control valves

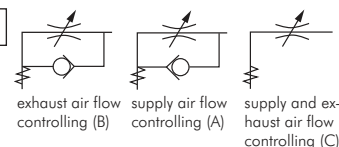
Throttles /one-way control valves (aluminium)

female thread

Materials: Banjo bolt: Brass nickel-plated, banjo: Aluminium anodised, seals: NBR, sealing and spacer ring: Plastic
Temperature range: -20°C to max. +80°C
Pressure range: 0.2 to max. 10 bar

- ✓ **Advantages:**
- Compact design
 - Undetachable marking on width flat shows the use and function of the banjo bolt even after years (B-exhaust air flow controlling, A-supply air flow controlling, C-exhaust and supply air flow controlling)

Type exhaust air flow contr. (B)	Type supply air flow contr. (A)	Type supply and exh. air flow contr. (C)	Thread
W/ slotted screw (can be adjusted using a screwdriver)			
GRL 18 A	GRLA 18 A	GRDL 18 A	G 1/8"
GRL 14 A	GRLA 14 A	GRDL 14 A	G 1/4"
W/ slotted screw and locking nut (can be adjusted using a screwdriver and locked using an open-end wrench)			
GRL 18 A KO	GRLA 18 A KO	---	G 1/8"
GRL 14 A KO	GRLA 14 A KO	---	G 1/4"
W/ knurled screw and locking nut (can be adjusted without a tool and locked using an open-end wrench)			
GRL 18 A KOR	GRLA 18 A KOR	---	G 1/8"
GRL 14 A KOR	GRLA 14 A KOR	---	G 1/4"



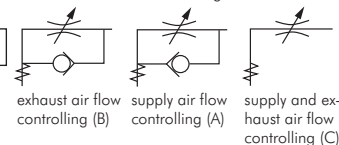
Throttles/one-way control valves (aluminium)

hose screw connection

Materials: Banjo bolt: Brass nickel-plated, banjo: Aluminium anodised, seals: NBR, sealing and spacer ring: Plastic
Temperature range: -20°C to max. +80°C
Pressure range: 0.2 to max. 10 bar

- ✓ **Advantages:**
- Compact design
 - Undetachable marking on width flat shows the use and function of the banjo bolt even after years (B-exhaust air flow controlling, A-supply air flow controlling, C-exhaust and supply air flow controlling)

Type exhaust air flow contr. (B)	Type supply air flow contr. (A)	Type supply and exh. air flow contr. (C)	Thread male	Hose Ø ext. x internal
W/ slotted screw (can be adjusted using a screwdriver)				
GRL 184 A	GRLA 184 A	GRDL 184 A	G 1/8"	6 x 4
GRL 186 A	GRLA 186 A	GRDL 186 A	G 1/8"	8 x 6
GRL 144 A	GRLA 144 A	GRDL 144 A	G 1/4"	6 x 4
GRL 146 A	GRLA 146 A	GRDL 146 A	G 1/4"	8 x 6
W/ slotted screw and locking nut (can be adjusted using a screwdriver and locked using an open-end wrench)				
GRL 184 A KO	GRLA 184 A KO	---	G 1/8"	6 x 4
GRL 186 A KO	GRLA 186 A KO	---	G 1/8"	8 x 6
GRL 144 A KO	GRLA 144 A KO	---	G 1/4"	6 x 4
GRL 146 A KO	GRLA 146 A KO	---	G 1/4"	8 x 6
GRL 148 A KO	GRLA 148 A KO	---	G 1/4"	10 x 8
W/ knurled screw and locking nut (can be adjusted without a tool and locked using an open-end wrench)				
GRL 184 A KOR	GRLA 184 A KOR	---	G 1/8"	6 x 4
GRL 186 A KOR	GRLA 186 A KOR	---	G 1/8"	8 x 6
GRL 144 A KOR	GRLA 144 A KOR	---	G 1/4"	6 x 4
GRL 146 A KOR	GRLA 146 A KOR	---	G 1/4"	8 x 6



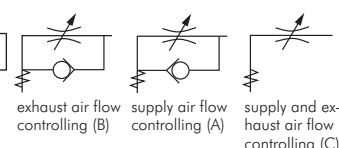
Throttles/one-way control valves (plastic)

hose screw connection

Materials: Banjo bolt: Brass nickel-plated, banjo: Plastic, seals: NBR, sealing and spacer ring: Plastic
Temperature range: -20°C to max. +80°C
Pressure range: 0.2 to max. 10 bar

- ✓ **Advantages:**
- Compact design
 - Undetachable marking on width flat shows the use and function of the banjo bolt even after years (B-exhaust air flow controlling, A-supply air flow controlling, C-exhaust and supply air flow controlling)

Type exhaust air flow contr. (B)	Type supply air flow contr. (A)	Type supply and exh. air flow contr. (C)	Thread male	Hose Ø ext. x internal
W/ slotted screw (can be adjusted using a screwdriver)				
GRL 184 K	GRLA 184 K	GRDL 184 K	G 1/8"	6 x 4
GRL 186 K	GRLA 186 K	GRDL 186 K	G 1/8"	8 x 6
GRL 144 K	GRLA 144 K	GRDL 144 K	G 1/4"	6 x 4
GRL 146 K	GRLA 146 K	GRDL 146 K	G 1/4"	8 x 6
W/ slotted screw and locking nut (can be adjusted using a screwdriver and locked using an open-end wrench)				
GRL 184 K KO	GRLA 184 K KO	---	G 1/8"	6 x 4
GRL 186 K KO	GRLA 186 K KO	---	G 1/8"	8 x 6
GRL 144 K KO	GRLA 144 K KO	---	G 1/4"	6 x 4
GRL 146 K KO	GRLA 146 K KO	---	G 1/4"	8 x 6
W/ knurled screw and locking nut (can be adjusted without a tool and locked using an open-end wrench)				
GRL 184 K KOR	GRLA 184 K KOR	---	G 1/8"	6 x 4
GRL 186 K KOR	GRLA 186 K KOR	---	G 1/8"	8 x 6
GRL 144 K KOR	GRLA 144 K KOR	---	G 1/4"	6 x 4
GRL 146 K KOR	GRLA 146 K KOR	---	G 1/4"	8 x 6



All data are considered to be unbinding reference values. We accept no liability for data selection that is not confirmed in writing. Pressure data refer, if not otherwise indicated, to liquids of Group II at +20°C.