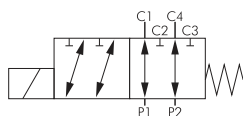


NG 6 hydraulic valves / 6/2-way valves



6/2-way gate valves

PN 250

Suitable: 6/2-way valves are electrical, direct actuating gate valves for inline assembly. With this, 2 consumers can be alternating supplied by one source. These valves are frequently used if for example only one control device is available but an additional function is required.
Materials: Housing: Spheroidal cast iron, internal parts: Steel, seals: NBR
Temperature range: Medium: -20°C to max. +80°C, (ambient: -20°C to +50°C)
Operating pressure: 0 to max. 250 bar
Power consumption: 6WV38: 36 W, 6WV12: 45 W
Protection class: IP 65, plug size 3
Media: Hydraulic oils on the basis of mineral oil

Type	A	C	Thread	Nominal flow	Symbol
6WV38-**	192	93	G 3/8"	50 l/min	
6WV12-**	217	98	G 1/2"	90 l/min	

Order example: 6WV38- **

Standard type

Designation for the options:

12V=-12V=
 24V=-24V=

Rexroth
 Bosch Group



TIP Use valves up to 40 l/min.!

Directional valves NG 6 electrically actuated in piston pusher designs up to 40 l/min.*

Suitable: These solenoid-operated way valves are used in hydraulic systems predominantly for starting, stopping and changing the direction of flow of the liquid. Using NG 6 the pressure valve, the flow control valve and the check valve sandwich plates are arranged like a stack to form a circuit in the smallest space possible.

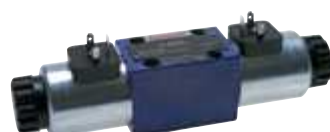
Materials: Housing: Spheroidal cast iron, internal parts: Steel, seals: NBR

Temperature range: -30°C to max. +80°C

Operating pressure: 0 to 350 bar

Nominal flow: Up to max. 80 l/min. (request pressure loss curves if required), we recommend usage up to Max. 40 l/min.


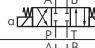
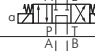
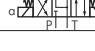


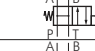


Media: Hydraulic oils on the basis of mineral oil (viscosity: Bosch-Rexroth 2.8 - 500 mm²/s, alternative: 20 - 400 mm²/s)



4/3- directional valve



4/2- directional valve

Type	Type alternative	Control voltage	Symbol
4/3-way valves			
4WE6H6X/EG24N9K4	LA-4WE6H/G24	24V DC	H 
4WE6H6X/EW230N9K4	LA-4WE6H/W230	230V AC	
4WE6E6X/EG24N9K4	LA-4WE6E/G24	24V DC	E 
4WE6E6X/EW230N9K4	LA-4WE6E/W230	230V AC	
4WE6G6X/EG24N9K4	LA-4WE6G/G24	24V DC	G 
4WE6G6X/EW230N9K4	LA-4WE6G/W230	230V AC	
4WE6J6X/EG24N9K4	LA-4WE6J/G24	24V DC	J 
4WE6J6X/EW230N9K4	LA-4WE6J/W230	230V AC	
4/2-way valves			
4WE6D6X/OFEG24N9K4	LA-4WE6D/OFG24	24V DC	D/OF 
4WE6D6X/OFEW230N9K4	LA-4WE6D/OFW230	230V AC	
4WE6HA6X/EG24N9K4	LA-4WE6HA/G24	24V DC	HA 
4WE6HA6X/EW230N9K4	LA-4WE6HA/W230	230V AC	
4WE6HB6X/EG24N9K4	LA-4WE6HB/G24	24V DC	HB 
4WE6HB6X/EW230N9K4	LA-4WE6HB/W230	230V AC	
4WE6D6X/EG24N9K4	LA-4WE6D/G24	24V DC	D 
4WE6D6X/EW230N9K4	LA-4WE6D/W230	230V AC	
4WE6Y6X/EG24N9K4	LA-4WE6Y/G24	24V DC	Y 
4WE6Y6X/EW230N9K4	LA-4WE6Y/W230	230V AC	

Fastening screws DIN 912-M5-12.9 (CAUTION: Only these strength classes may be used!)

912-M5x50 12.9	912-M5x45 12.9	Socket head cap screws with hexagon socket
		Strength: 10.9/12.9
		Clamping length: 42 (Bosch-Rexroth)/37.3 (altern.)

Blind plate for directional valves NG 6

---	LA-4WE6V	Blind plate including 4 O-rings
-----	----------	---------------------------------

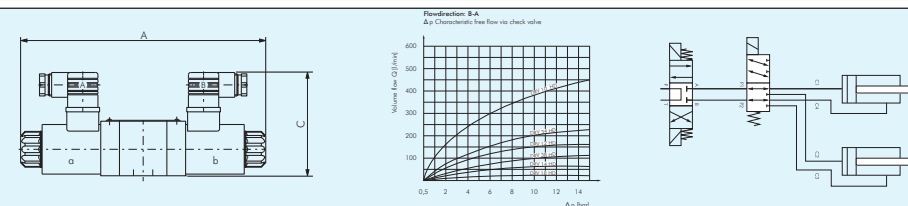
Spare parts for directional valves

4WE6MAG12V=	LA-4WE6MAG12V=	Magnetic coil 12V DC
4WE6MAG24V=	LA-4WE6MAG24V=	Magnetic coil 24V DC
4WE6MAG230V	LA-4WE6MAG230V	Magnetic coil 230V AC
4WE6MAGDICHT	---	Sealing set for Pohl tube
ORING NG6	ORING NG6	O-ring set for connection plates (4 pieces O-rings)

* our operating recommendations

Dimensions, valve flow diagrams & application examples can be found in our Online Shop

Many additional products and sizes are available in our Online Shop!



All data are considered to be unbinding reference values. We accept no liability for data selection that is not confirmed in writing. Pressure data refer, if not otherwise indicated, to liquids of Group II at +20°C.