

Hydraulic pressure limiting valves

Pressure limiting valves for inline assemblies

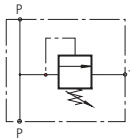
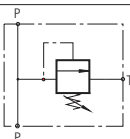
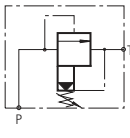
up to 150 l/min

Suitable: The valves restrict the system pressure and are ideal for overpressure protection as well as for continuous operation.

Materials: Valve housing: Aluminium, screw-in valve: Zinc-plated steel, seal: NBR

Temperature range: -20 to max. +80°C

Media: Hydraulic oils on the basis of mineral oil

Type	Thread	Pressure level	Symbol
Direct control, nominal flow 30 l/min			
DBV38P50Q30	G 3/8"	50 bar	
DBV38P100Q30	G 3/8"	100 bar	
DBV38P210Q30	G 3/8"	210 bar	
DBV38P350Q30	G 3/8"	350 bar	
DBV12P50Q30	G 1/2"	50 bar	
DBV12P100Q30	G 1/2"	100 bar	
DBV12P210Q30	G 1/2"	210 bar	
DBV12P350Q30	G 1/2"	350 bar	
Direct control, nominal flow 80 l/min			
DBV12P50Q80	G 1/2"	50 bar	
DBV12P100Q80	G 1/2"	100 bar	
DBV12P250Q80	G 1/2"	250 bar	
DBV34P50Q80	G 3/4"	50 bar	
DBV34P100Q80	G 3/4"	100 bar	
DBV34P250Q80	G 3/4"	250 bar	
Pilot operated, nominal flow 150 l/min			
DBV12P70Q150	G 1/2"	70 bar	
DBV12P105Q150	G 1/2"	105 bar	
DBV12P210Q150	G 1/2"	210 bar	
DBV12P350Q150	G 1/2"	350 bar	
DBV34P70Q150	G 3/4"	70 bar	
DBV34P105Q150	G 3/4"	105 bar	
DBV34P210Q150	G 3/4"	210 bar	
DBV34P350Q150	G 3/4"	350 bar	
DBV10P210Q150	G 1"	210 bar	
DBV10P350Q150	G 1"	350 bar	

Especially good value!



type DBV...Q30



type DBV...Q80



type DBV...Q150



Valve flow diagram can be found in the item details in our Online Shop

Pressure limiting valves for inline assemblies

up to 250 l/min

Description: The valves restrict the system pressure and are ideal for overpressure protection as well as for continuous operation.

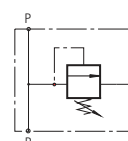
Materials: Valve housing and screw-in valve: Steel, hand wheel: Plastic, seal: NBR

Temperature range: -30°C to max. +80° C

Media: Hydraulic oil on the basis of mineral oil

Type	Thread	Pressure level
Bosch-Rexroth		
Nominal flow 50 l/min		
DBDH6G1X/25	G 1/4"	25 bar
DBDH6G1X/50	G 1/4"	50 bar
DBDH6G1X/100	G 1/4"	100 bar
DBDH6G1X/200	G 1/4"	200 bar
DBDH6G1X/315	G 1/4"	315 bar
DBDH6G1X/400	G 1/4"	400 bar
Nominal flow 120 l/min		
DBDH10G1X/25	G 1/2"	25 bar
DBDH10G1X/50	G 1/2"	50 bar
DBDH10G1X/100	G 1/2"	100 bar
DBDH10G1X/200	G 1/2"	200 bar
DBDH10G1X/315	G 1/2"	315 bar
DBDH10G1X/400	G 1/2"	400 bar
Nominal flow 250 l/min		
DBDH20G1X/25	G 1"	25 bar
DBDH20G1X/50	G 1"	50 bar
DBDH20G1X/100	G 1"	100 bar

Rexroth
Bosch Group



Valve flow diagram can be found in the item details in our Online Shop



Hydraulic pumps and electric motors can be found in the Online Shop



Hydraulic oil from page 574



LOCTITE
Liquid seals, gaskets & tapes from page 549



Cutting ring fittings from page 77

All data are considered to be unbinding reference values. We accept no liability for data selection that is not confirmed in writing. Pressure data refer, if not otherwise indicated, to liquids of Group II at +20°C.