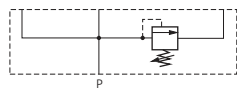
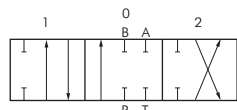


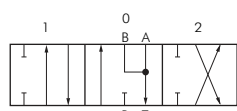
# Hydraulic hand lever valves



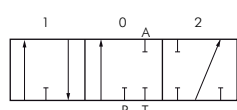
input element with pressure limiting valve  
(type CH50 ELEMENT E)



hand lever element  
(type CH50 ELEMENT DRR)



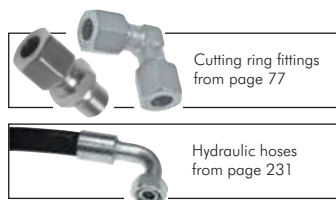
hand lever element  
(type CH50 ELEMENT LRR)



hand lever element  
(type CH50 ELEMENT SRR)



output element  
(type CH50 ELEMENT S)



Cutting ring fittings  
from page 77

Hydraulic hoses  
from page 231

## Hand lever valves in modular designs

up to 50 l/min

**Suitable:** These valves are used in mobile and industrial applications. Compact control blocks with up to 9 consumers such as hydraulic cylinders and hydraulic motors can be assembled using the modular system. In the basic components the zero position of the valve is always designed as a no-pressure cycle from P to T. The input element has a pressure limiting valve with a settings range of 40 - 320 bar. As a standard, the hand lever elements are provided with a spring return to the centre position. The components labelled as retrofitting kits are used to retrofit the basic components from spring return to detend or block the no-pressure cycle.

**Materials:** Body: Steel and plastic, internal parts: Steel, seal: Plastic, NBR

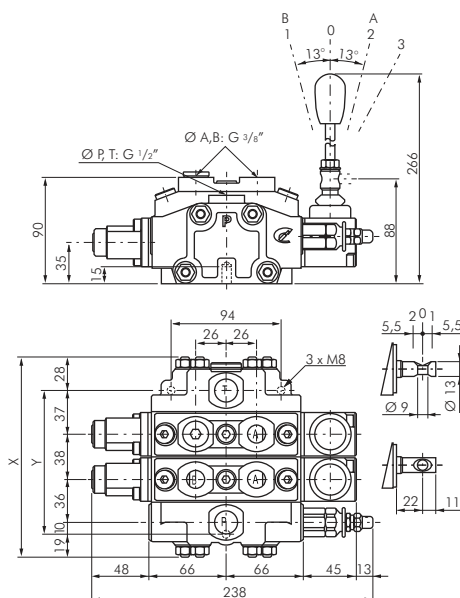
**Temperature range:** -30°C to max. +90°C

**Operating pressure:** Input pressure: 0 to max. 320 bar, return flow pressure max. 35 bar (input element with pressure limiting valve can be set between 40 and 320 bar)

**Media:** Hydraulic fluids on mineral oil basis viscosity 10 mm<sup>2</sup>/s to 300 mm<sup>2</sup>/s

Type	Description/function
<b>Input and output elements</b>	
CH50 ELEMENT E	Input element with pressure limiting valve
CH50 ELEMENT S	Output element with pressureless bypass
<b>Hand lever elements</b>	
CH50 ELEMENT DRR	Hand lever element double acting A/B blocked
CH50 ELEMENT LRR	Hand lever element double acting A/B open
CH50 ELEMENT SRR	Hand lever element single acting A blocked
<b>Tie rod sets</b>	
CH50 ZUGANKER T1	Tie rod set for 1 hand lever element
CH50 ZUGANKER T2	Tie rod set for 2 hand lever elements
CH50 ZUGANKER T3	Tie rod set for 3 hand lever elements
CH50 ZUGANKER T4	Tie rod set for 4 hand lever elements
CH50 ZUGANKER T5	Tie rod set for 5 hand lever elements
CH50 ZUGANKER T6	Tie rod set for 6 hand lever elements
CH50 ZUGANKER T7	Tie rod set for 7 hand lever elements
CH50 ZUGANKER T8	Tie rod set for 8 hand lever elements
CH50 ZUGANKER T9	Tie rod set for 9 hand lever elements
<b>Retrofitting kits</b>	
CH50 RASTUNG C3	Detend hand lever all positions
CH50 RASTUNG C1	Detend hand lever in position 1
CH50 RASTUNG C2	Detend hand lever in position 2
CH50 MODUL CSF	Pressure continuation or blocking the pressureless circulation (see application example)

## Dimensions - hand lever valves



Number of hand lever elements	x	y	Max. flow l/min
1	130	83	50
2	168	121	50
3	206	159	45
4	244	197	45
5	282	235	45
6	320	273	40
7	358	311	40
8	396	349	35
9	434	387	35

All data are considered to be unbinding reference values. We accept no liability for data selection that is not confirmed in writing. Pressure data refer, if not otherwise indicated, to liquids of Group II at +20°C.