

Single acting small cylinders ISO 6432/CETOP RP 52 P



Pressure-force tables can be found on page 3



ZEM



TIP

We produce your desired stroke!

Small cylinders ISO 6432/CETOP RP 52 P, single acting with magnetic pistons

Materials: Head and foot: Aluminium anodised, cylinder tube: AISI 304, piston rod: AISI 303, seal: NBR/PUR

Temperature range: -20°C to max. +80°C

Operating pressure: Max. 10 bar

Piston Ø 8 mm	Piston Ø 10 mm	Piston Ø 12 mm	Piston Ø 16 mm	Piston Ø 20 mm	Piston Ø 25 mm	Desired stroke/ standard stroke
ZEM 8/**	ZEM 10/**	ZEM 12/**	ZEM 16/**	ZEM 20/**	ZEM 25/**	1 to 50
ZEM 8/10	ZEM 10/10	ZEM 12/10	ZEM 16/10	ZEM 20/10	ZEM 25/10	10
ZEM 8/25	ZEM 10/25	ZEM 12/25	ZEM 16/25	ZEM 20/25	ZEM 25/25	25
ZEM 8/40	ZEM 10/40	ZEM 12/40	ZEM 16/40	ZEM 20/40	ZEM 25/40	40
ZEM 8/50	ZEM 10/50	ZEM 12/50	ZEM 16/50	ZEM 20/50	ZEM 25/50	50

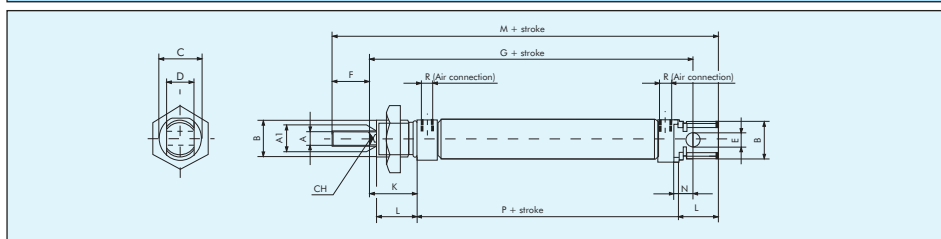
Enter your required stroke here on your order! (taking into account the buckling load)

Order example: ZEM 8/**

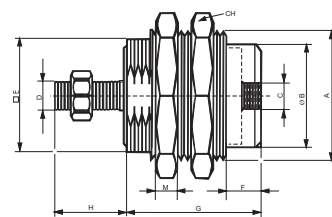
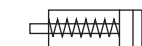
Standard type

Piston Ø/stroke

Dimensions are found on the previous page



Pressure-force tables can be found on page 3



Single acting screw-in cylinders

Materials: Body: Brass nickel-plated, piston rod: Stainless steel, seal: NBR

Temperature range: -20°C to max. +80°C

Operating pressure: 2 to 7 bar

Piston Ø 6 mm	Piston Ø 10 mm	Piston Ø 16 mm	Spring force when closed	Spring force when open	Stroke
With threads on the piston rod					
HA 6/5	HA 10/5	HA 16/5	1.5 N	4 N	5
HA 6/10	HA 10/10	HA 16/10	2.5 N	6 N	10
HA 6/15	HA 10/15	HA 16/15	4.5 N	11 N	15
Without threads on the piston rod					
HB 6/5	HB 10/5	HB 16/5	1.5 N	4 N	5
HB 6/10	HB 10/10	HB 16/10	2.5 N	6 N	10
HB 6/15	HB 10/15	HB 16/15	4.5 N	11 N	15

Piston Ø	A	B	C	D	E	F	G (with stroke)			H	M	CH
6	M 10 x 1	8.5	M 5	M 3	9	5	18.5	25.5	32.5	9.0	3	14
10	M 15 x 1.5	13.0	M 5	M 4	14	5	20.5	27.0	34.0	11.5	4	19
16	M 22 x 1.5	19.0	M 5	M 5	20	6	23.5	29.5	36.0	14.0	5	27



Push-in fittings
Ø 3 - 32 mm
from page 24



One-way
control valves
from page 440



Pressure regulator
valves with push-in
fittings from page 34



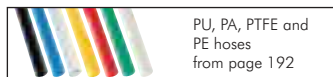
Festo screwed
connections
can be found in
our Online Shop



Sleeves
from page 118



Multiple couplings
from page 41



PU, PA, PTFE and
PE hoses
from page 192



Valves
from page 404

All data are considered to be unbinding reference values. We accept no liability for data selection that is not confirmed in writing. Pressure data refer, if not otherwise indicated, to liquids of Group II at +20°C.