

## Pilot operated check valves

MSV



**Materials:** Body and sleeve: Brass nickel-plated, seals: NBR, holding claws: Stainless steel (only silicone-free seals and lubricants are used during assembly)

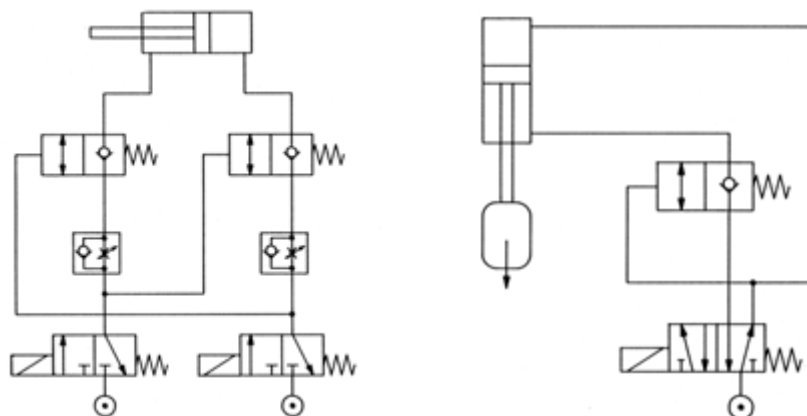
**Temperature range:** -20°C to max. +80°C

**Operating pressure:** 0.5 - 10 bar

**Media:** Oiled and unoled compressed air, neutral and non-hazardous gasses

**Function:** The check valve function can be used for a brief intermediate stop of an actuator. If a control signal is applied to the actuating connection, the flow between banjo and male threads is possible in both directions. If there is no control signal, the valve locks the flow from the male thread to the banjo (venting the actuator), thus causing it to stop briefly. The flow from the banjo to the male threads (towards the actuator) is unaffected by the control signal.

Type without manual emergency activation	G <sub>2</sub> actuation (FT)	Type with manual emergency activation	D <sub>2</sub> actuation (push-in fitting)	G <sub>1</sub> Screw-in thread	D Banjo connection
<b>Banjo with female threads</b>					
STOP 18 MSV	M 5	STOP 18 HN MSV	4	G 1/8"	G 1/8"
STOP 14 MSV	G 1/8"	STOP 14 HN MSV	4	G 1/4"	G 1/4"
<b>Banjo with push-in fitting</b>					
STOP 184 MSV	M 5	STOP 184 HN MSV	4	G 1/8"	4
STOP 186 MSV	M 5	STOP 186 HN MSV	4	G 1/8"	6
STOP 188 MSV	M 5	STOP 188 HN MSV	4	G 1/8"	8
STOP 146 MSV	G 1/8"	STOP 146 HN MSV	4	G 1/4"	6
STOP 148 MSV	G 1/8"	STOP 148 HN MSV	4	G 1/4"	8
STOP 1410 MSV	G 1/8"	STOP 1410 HN MSV	4	G 1/4"	10
STOP 1412 MSV	G 1/8"	STOP 1412 HN MSV	4	G 1/4"	12



## One-way control valves with pilot operated check valves

Standard

**Materials:** Body: Brass nickel-plated/PA 66, sleeve: PA 66, seal: NBR, holding claws: Stainless steel, cartridge: ZnDC zinc-plated (only silicone-free seals and lubricants are used during assembly)

**Temperature range:** -20°C to max. +80°C

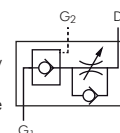
**Operating pressure:** 0 - 10 bar

**Function:** This functional combination combines the function of a one-way control valve used to regulate exhaust air flow with that of a check valve that can be unlocked pneumatically. The check valve function can be used for a brief intermediate stop. If a control signal is applied to the female thread, the exhaust air flow is controlled from the male thread to the hose. If there is no control signal on the female thread, the valve locks the flow from the male thread to the hose (venting the actuator), thus causing it to stop briefly. The flow from the hose to the male thread (towards the actuator) is not regulated by the valve and is always possible (regardless of whether or not there is a signal).



- Advantages:**
- Compact design
  - Can be easily adjusted without tools
  - Hose and thread connector can be positioned freely, thus allowing for maximum flexibility when installing the tubes

Type	G <sub>1</sub>	G <sub>2</sub>	D	Type	G <sub>1</sub>	G <sub>2</sub>	D
GRAIQS 186 G STOP	G 1/8"	M 5	6	GRAIQS 148 G STOP	G 1/4"	G 1/8"	8
GRAIQS 188 G STOP	G 1/8"	M 5	8	GRAIQS 3810 G STOP	G 3/8"	G 1/8"	10
GRAIQS 146 G STOP	G 1/4"	G 1/8"	6	GRAIQS 1212 G STOP	G 1/2"	G 1/4"	12



**ACE**  
Shock absorber  
from page 502



**FESTO**  
You will find grippers  
in our Online Shop



**FESTO**  
Festo cylinders can be  
found in our Online Shop



**FESTO**  
Mini-carriages are found  
in our Online Shop



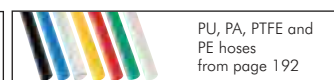
Push-in fittings  
Ø 3 - 32 mm  
from page 24



Threaded fittings  
from page 102



Multiple couplings  
from page 41



PU, PA, PTFE and  
PE hoses  
from page 192

All data are considered to be unbinding reference values. We accept no liability for data selection that is not confirmed in writing. Pressure data refer, if not otherwise indicated, to liquids of Group II at +20°C.