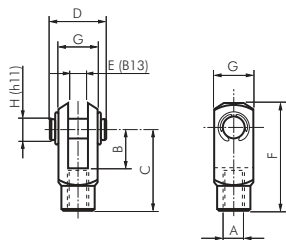


Cylinders ISO 15552 - accessories



Piston rod nuts for cylinder ISO 15552

Type zinc-plated steel	Type V4A (stainless steel)	Thread	SW	For cylinder Ø
GM 10125 ST	GM 10125 ES	M 10 x 1.25	17	25 and 32
GM 12125 ST	GM 12125 ES	M 12 x 1.25	19	40
GM 1615 ST	GM 1615 ES	M 16 x 1.5	24	50 and 63
GM 2015 ST	GM 2015 ES	M 20 x 1.5	30	80 and 100
GM 272 ST	GM 272 ES	M 27 x 2	41	125
GM 362 ST	GM 362 ES	M 36 x 2	55	160 and 200



Yokes with bolts for cylinder ISO 15552

Type zinc-plated steel	Type AISI 303**	A	B	C	D	E	F	G	H	For cylinder Ø
GAK 25/32	GAK 25/32 ES	M 10 x 1.25	20	40	27	10	52	20	10	25 and 32
GAK 40	GAK 40 ES	M 12 x 1.25	24	48	33	12	62	24	12	40
GAK 50/63	GAK 50/63 ES	M 16 x 1.5	32	64	43	16	83	32	16	50 and 63
GAK 80/100	GAK 80/100 ES*	M 20 x 1.5	40	80	51	20	105	40	20	80 and 100
GAK 125	GAK 125 ES*	M 27 x 2	55	110	72	30	148	55	30	125
GAK 160/200	---	M 36 x 2	72	144	84	35	188	70	35	160 and 200

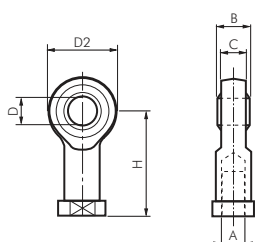
* following DIN/ISO, ** type stainless steel can optically differ from the drawing

Swivel heads for cylinder ISO 15552

Materials: Type zinc-plated steel: Housing: Zinc-plated steel, bearing: Brass/PTFE, inside ring: 100Cr6
Type stainless steel: Housing: AISI 304, bearing: AISI 304/PTFE, inside ring: AISI 420

Type zinc-plated steel	Type stainless steel	A	B	C	D	D2	L	H	For cylinder Ø
SGS 25/32	SGS 25/32 ES	M 10 x 1.25	14	10.5	10	28	20	43	32
SGS 40	SGS 40 ES	M 12 x 1.25	16	12.0	12	32	22	50	40
SGS 50/63	SGS 50/63 ES	M 16 x 1.5	21	15.0	16	42	28	64	50 and 63
SGS 80/100	SGS 80/100 ES	M 20 x 1.5	25	18.0	20	50	33	77	80 and 100
SGS 125	SGS 125 ES	M 27 x 2	37	25.0	30	70	51	110	125
SGS 160/200	SGS 160/200 ES	M 36 x 2	43*	28.0	35	80	56	125	160 and 200

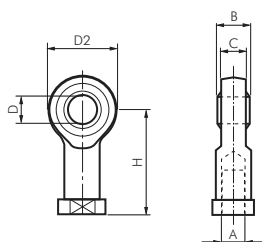
* standard deviation



Swivel heads made of plastic for cylinder ISO 15552

Material: High performance polymer, self lubricating
Temperature range: -40°C to max. +80°C
Operating range: Wet environments, weak acids and alkalis, water, extreme dirt

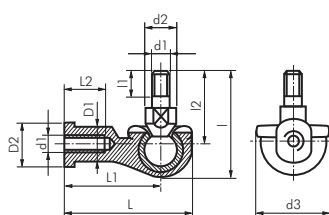
Type	A	B	C	D	D2	L	H	For cylinder Ø
SGS 25/32 KU	M 10 x 1.25	14	10.5	10	30	20	43	32
SGS 40 KU	M 12 x 1.25	16	12	12	34	24	50	40
SGS 50/63 KU	M 16 x 1.5	21	15	16	42	31	64	50 and 63
SGS 80/100 KU	M 20 x 1.5	25	18	20	50	33	77	80 and 100



Swivel heads 90° for cylinder ISO 15552

Material: Body: Die-cast aluminium, spigot and ball: Zinc-plated steel

Type	d1	d2	d3	L	I	L1	I1	L2	I2	D1	D2	For cylinder Ø
SGS 25/32-90	M 10 x 1.25	14	30	58	51.5	43	15	21	37	15.0	19	32
SGS 40-90	M 12 x 1.25	19	32	66	57.5	50	17	25	42	17.5	22	40
SGS 50/63-90	M 16 x 1.5	22	44	84	79.5	64	23	32	60	22.0	27	50 and 63
SGS 80/100-90	M 20 x 1.5	29	50	99	90.0	77	25	35	68	27.5	34	80 and 100



Mini ball valves
from page 288



Ball valves
with actuator
from page 304



Service units
FUTURA series
from page 330



Valves
from page 414

All data are considered to be unbinding reference values. We accept no liability for data selection that is not confirmed in writing. Pressure data refer, if not otherwise indicated, to liquids of Group II at +20°C.