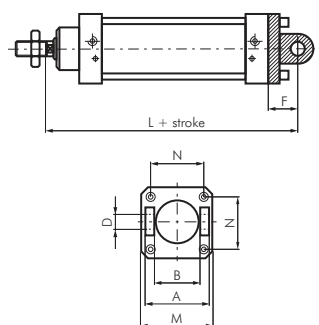


# Cylinders ISO 15552 - accessories



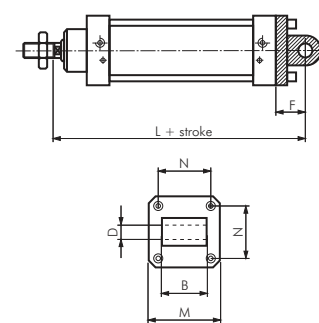
## Swivel fastening forks

for cylinder ISO 15552

Supply volume: 1 swivel fastening, incl. 4 fastening screws

Type aluminium with bushing	Type AISI 316 INOX	A	B	Ø D	L	F	M	N	For cylinder Ø
TC 32	TC 32 ES	45	26	10	142	22	45	32.5	32
TC 40	TC 40 ES	52	28	12	160	25	52*	38.0	40
TC 50	TC 50 ES	60	32	12	170	27	65	46.5	50
TC 63	TC 63 ES	70	40	16	190	32	75	56.5	63
TC 80	TC 80 ES	90	50	16	210	36	95	72.0	80
TC 100	TC 100 ES	110	60	20	230	41	115	89.0	100
TC 125	TC 125 ES	130	70	25	275	50	140	110.0	125
TC 160	---	170	90	30	315	55	180	140.0	160
TC 200	---	170	90	30	335	60	220	175.0	200
TC 250	---	200	110	40	375	70	270	220.0	250

\* type stainless steel: 55 mm



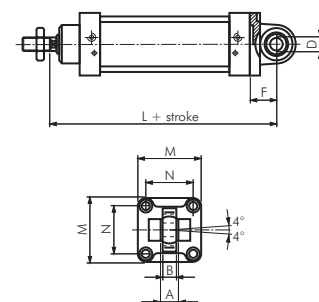
## Swivel fastenings clips

for cylinder ISO 15552

Supply volume: 1 swivel fastening, incl. 4 fastening screws

Type aluminium	Type AISI 316 INOX	B	Ø D	F	L	M	N	For cylinder Ø
TG 32	TG 32 ES	26	10	22	142	45	32.5	32
TG 40	TG 40 ES	28	12	25	160	52*	38.0	40
TG 50	TG 50 ES	32	12	27	170	65	46.5	50
TG 63	TG 63 ES	40	16	32	190	75	56.5	63
TG 80	TG 80 ES	50	16	36	210	95	72.0	80
TG 100	TG 100 ES	60	20	41	230	115	89.0	100
TG 125	TG 125 ES	70	25	50	275	140	110.0	125
TG 160	---	90	30	55	315	180	140.0	160
TG 200	---	90	30	60	335	220	175.0	200
TG 250	---	110	40	70	375	270	220.0	250

\* type stainless steel: 55 mm



## Swivel fastenings spherical clips

for cylinder ISO 15552

Supply volume: 1 swivel fastening, incl. 4 fastening screws

⚠ Warning: Only use FFQ bolts to connect to TQ types!

Type steel burnished	Type aluminium	Type AISI 316 INOX	A	B	Ø D	F	L	M	N	For cylinder Ø
TE 32	TE 32 ALU	TE 32 ES	14	10.5	10	22	142	45	32.5	32
TE 40	TE 40 ALU	TE 40 ES	16	12.0	12	25	160	55	38.0	40
TE 50	TE 50 ALU	TE 50 ES	21	15.0	16	27	170	65	46.5	50
TE 63	TE 63 ALU	TE 63 ES	21	15.0	16	32	190	75	56.5	63
TE 80	TE 80 ALU	TE 80 ES	25	18.0	20	36	210	95	72.0	80
TE 100	TE 100 ALU	TE 100 ES	25	18.0	20	41	230	115	89.0	100
TE 125	TE 125 ALU	TE 125 ES	37	25.0	30	50	275	140	110.0	125
---	---	---	43	28.0	35	55	315	180	140.0	160
---	TE 200 ALU	---	43	28.0	35	60	335	220	175.0	200
---	TE 250 ALU	---	49	33.0	40	70	375	270	220.0	250

## Swivel fastening forks for spherical clips

for cylinder ISO 15552

Supply volume: 1 swivel fastening, incl. 4 fastening screws

⚠ Warning: Only use type FFQ bolts to connect to TE and TF types!

Type aluminium	Type AISI 316 INOX	A	B	Ø D	E	F	H	L	M	N	R	For cylinder Ø
TQ 32	TQ 32 ES	34	14	10	6.6	22	9	142	45	32.5	17	32
TQ 40	TQ 40 ES	40	16	12	6.6	25	9	160	52	38.0	20	40
TQ 50	TQ 50 ES	45	21	16	9.0	27	11	170	65	46.5	22	50
TQ 63	TQ 63 ES	51	21	16	9.0	32	11	190	75	56.5	25	63
TQ 80	TQ 80 ES	65	25	20	11.0	36	14	210	95	72.0	30	80
TQ 100	TQ 100 ES	75	25	20	11.0	41	14	230	115	89.0	32	100
TQ 125	TQ 125 ES	97	37	30	14.0	50	20	275	140	110.0	42	125
TQ 160	---	122	43	35	18.0	55	20	315	180	140.0	46	160
TQ 200	---	122	43	35	18.0	60	25	335	220	175.0	49	200
TQ 250	---	125	49	40	22.0	70	25	375	270	220.0	55	250

All data are considered to be unbinding reference values. We accept no liability for data selection that is not confirmed in writing. Pressure data refer, if not otherwise indicated, to liquids of Group II at +20°C.