

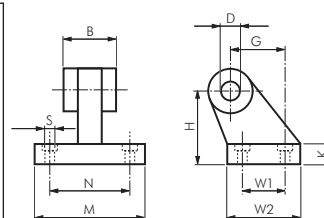
Cylinders ISO 15552 - accessories

Swivel fastening 90° clips

for cylinder ISO 15552

Type aluminium	Type AISI 316	B	Ø D	G	H	K	M	N	Ø S	W 1	W 2	For cylinder Ø
TD 32	TD 32 ES	26	10	21	32	8	51	38	6.6	18	31	32
TD 40	TD 40 ES	28	12	24	36	10	54	41	6.6	22	35	40
TD 50	TD 50 ES	32	12	33	45	12	65	50	9.0	30	45	50
TD 63	TD 63 ES	40	16	37	50	14 (12)*	67	52	9.0	35	50	63
TD 80	TD 80 ES	50	16	47	63	14	86	66	11.0	40	60	80
TD 100	TD 100 ES	60	20	55	71	17 (15)*	96	76	11.0	50	70	100
TD 125	TD 125 ES	70	25	70	90	20	124	94	14.0	60	90	125
TD 160	---	90	30	97	115	25	156	118	14.0	88	126	160
TD 200	---	90	30	105	135	30	162	122	18.0	90	130	200

* TD ... ES

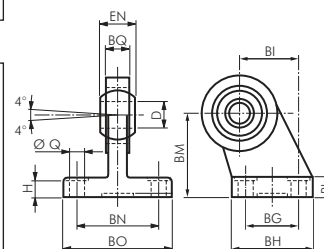


Swivel fastening 90° spherical clips

for cylinder ISO 15552

Warning: Only use FFQ bolts to connect to TQ types!

Type steel/ GGG	Type AISI 316	Ø Q	BG	BH	BI	BL	BM	BN	BO	EN	BQ	Ø D	H	For cylinder Ø
TF 32	TF 32 ES	6.6	18	31	21	10	32	38	51	14	10.5	10	8.5	32
TF 40	TF 40 ES	6.6	22	35	24	10	36	41	54	16	12.0	12	8.5	40
TF 50	TF 50 ES	9.0	30	45	33	12	45	50	65	21	15.0	16	10.5	50
TF 63	TF 63 ES	9.0	35	50	37	12	50	52	67	21	15.0	16	10.5	63
TF 80	TF 80 ES	11.0	40	60	47	14	63	66	86	25	18.0	20	11.5	80
TF 100	TF 100 ES	11.0	50	70	55	15	71	76	96	25	18.0	20	12.5	100
TF 125	TF 125 ES	13.5	60	90	70	20	90	94	124	37	25.0	30	17.0	125

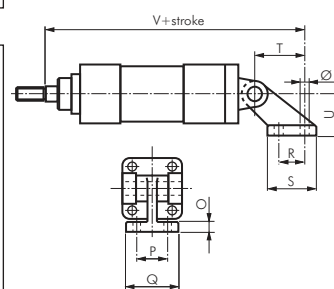


Swivel fastening 90° clips

for cylinder ISO 15552

Supply volume: 1 swivel fastening (includes fork and bolts), incl. 4 fastening screws

Type aluminium	Ø L	O	P	Q	R	S	T	U	V	For cylinder Ø
TH 32	7	8	25	41	20	37	38	32	180	32
TH 40	9	10	32	52	32	54	57	45	217	40
TH 50	9	10	32	52	32	54	57	45	227	50
TH 63	11	12	40	63	50	75	82	63	272	63
TH 80	11	12	40	63	50	75	82	63	292	80
TH 100	14	17	50	80	70	103	110	90	340	100
TH 125	14	17	50	80	70	103	110	90	385	125
TH 160	18	20	63	110	110	154	160	140	475	160
TH 200	18	20	63	110	110	154	160	140	495	200

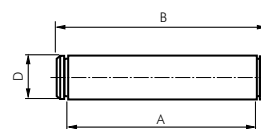


Bolts for swivel fastenings

for cylinder ISO 15552

Supply volume: Bolts complete with compression ring and cotter pins

Type zinc-plated steel	Type AISI 316	A	B	D	For cylinder Ø
FF 32	FF 32 ES	46.0	53	10	32
FF 40	FF 40 ES	53.0	60	12	40
FF 50	FF 50 ES	61.0	68	12	50
FF 63	FF 63 ES	71.0	78	16	63
FF 80	FF 80 ES	91.0	98	16	80
FF 100	FF 100 ES	111.0	118	20	100
FF 125	FF 125 ES	132.0	139	25	125
FF 160/200	---	171.5	178	30	160 and 200
FF 250	---	202.0	211	40	250



Bolts for spherical clips

for cylinder ISO 15552

Supply volume: Bolts complete with compression rings

Type zinc-plated steel	Type AISI 316	A	B	C	Ø D	E	F	For cylinder Ø
FFQ 32	FFQ 32 ES	32.5	41	4.5	10	3	14	32
FFQ 40	FFQ 40 ES	38.0	48	6.0	12	4	16	40
FFQ 50	FFQ 50 ES	43.0	54	6.0	16	4	20	50
FFQ 63	FFQ 63 ES	49.0	60	6.0	16	4	20	63
FFQ 80	FFQ 80 ES	63.0	75	6.0	20	4	24	80
FFQ 100	FFQ 100 ES	73.0	85	6.0	20	4	24	100
FFQ 125	FFQ 125 ES	94.0	110	9.0	30	6	36	125
FFQ 160/200	---	119.0	135	9.0	35	6	41	160 and 200
FFQ 250	---	121.0	140	12.0	40	8	48	250

