

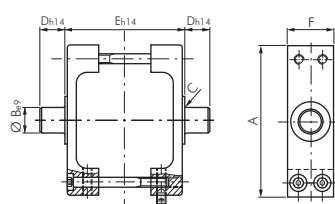
Cylinders ISO 15552 - accessories

Centre swivel fastenings

for cylinder ISO 15552 (XL)

Used for XL model series

Supply volume: 1 pc. centre swivel fastening



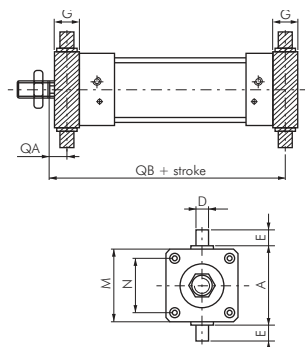
Type zinc-plated steel	A	B	C	D	E	F	For cylinder Ø
TJX 32	65	12	1.0	12	50	25	32
TJX 40	75	16	1.5	16	63	25	40
TJX 50	95	16	1.6	16	75	30	50
TJX 63	105	20	1.6	20	90	30	63
TJX 80	130	20	1.6	20	110	30	80
TJX 100	145	25	2.0	25	132	40	100
TJX 125	176	25	2.0	25	160	40	125

Flange swivel fastenings

for cylinder ISO 15552

Used for all ISO 15552 cylinder

Supply volume: 1 pc. swivel fastening including fastening screws



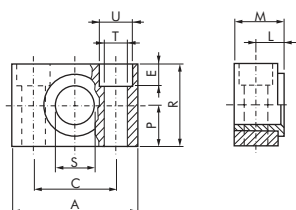
Type zinc-plated steel	G	QA	QB	M	Type AISI 316Ti INOX	G	QA	QB	A	Ø D	E	M	N	For cylinder Ø
TJF 32	14	19.0	127.0	46	TJF 32 ES	16	18	128	50	12	12	50	32.5	32
TJF 40	19	20.5	144.5	59	TJF 40 ES	20	20	145	63	16	16	55	38.0	40
TJF 50	19	27.5	152.5	69	TJF 50 ES	24	25	155	75	16	16	65	46.5	50
TJF 63	24	25.0	170.0	84	TJF 63 ES	24	25	170	90	20	20	75	56.5	63
TJF 80	24	34.0	186.0	102	TJF 80 ES	28	32	188	110	20	20	100	72.0	80
TJF 100	29	36.5	203.5	125	TJF 100 ES	38	32	208	132	25	25	120	89.0	100

Bearing blocks for centre swivel fastenings

for cylinder ISO 15552

Materials: Bearing sleeve: sintered bronze (type AISI 316: PTFE)

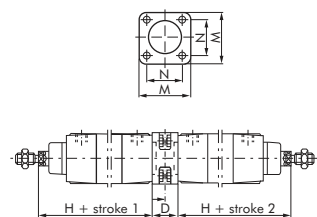
Supply volume: 2 bearing blocks



Type zinc-plated steel	Type AISI 316 INOX	A	M	R	P	C	S	L	U	T	E	For cylinder Ø
TL 32	TL 32 ES	46	18.0	30	15	32	12	10.5	11	6.6	7	32
TL 40/50	TL 40/50 ES	55	21.0	36	18	36	16	12.0	15	9.0	9	40 and 50
TL 63/80	TL 63/80 ES	65	23.0	40	20	42	20	13.0	18	11.0	11	63 and 80
TL 100	TL 100 ES	75	28.5	50	25	50	25	16.0	20	14.0	13	100 and 125
TL 160/200	---	92	40.0	60	30	60	32	22.5	26	18.0	17	160 and 200

Connecting pieces for creating a multi-position cylinder (3 or 4)

Supply volume: 1 connecting piece including the necessary screws



Type aluminium	D	H	M	N	For cylinder Ø
TN 32	55	120	45	32.5	32
TN 40	55	135	52	38.0	40
TN 50	68	143	65	46.5	50
TN 63	68	158	75	56.5	63
TN 80	38	174	93	72.0	80
TN 100	38	189	110	89.0	100
TN 125	120	225	140	110.0	125



All data are considered to be unbinding reference values. We accept no liability for data selection that is not confirmed in writing. Pressure data refer, if not otherwise indicated, to liquids of Group II at +20°C.