

Compact cylinders - SQ - accessories

Cylinder switches

for compact cylinder - SQ

Materials: Body: Plastic, screw: Metal

Connecting line: 3 m PVC cable, cross section: 2 or 3 x 0.2 mm²

Protection class: IP 67

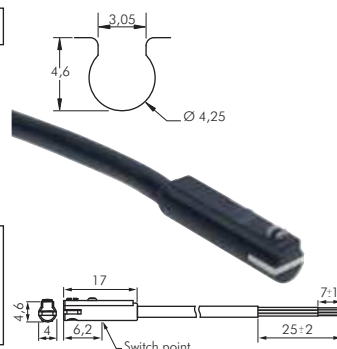
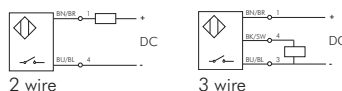
Temperature range: -10°C to max. +70°C

Switch type: Electronic

Note: The proximity switch with light emitting diode is used for the contactless position indicator of cylinders with magnetic pistons. It is mounted by pushing it in the groove of the cylinder and locking it using the threaded rod.

Suitable: For short stroke cylinder - SQ

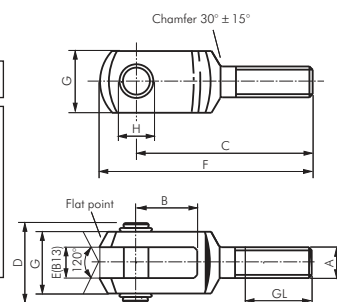
| Type | Operating voltage | Switching | Max. switching current/performance |
|---|-------------------|-------------------------|------------------------------------|
| 2-wire solid-state sensor | | | |
| ZSD 33 | 10 - 28 V DC | NO contact 50 mA/1.4 W | |
| 3-wire fully electronic sensor (PNP) | | | |
| ZSD 22 | 5 - 30 V DC | NO contact 200 mA/6.0 W | |



Yokes (male threads) with bolts

for compact cylinder - SQ

| Type zinc-plated steel | A | B | C | D | E | F | G | H | GL | For cylinder Ø |
|------------------------|------|----|-----|----|----|-----|----|----|----|----------------|
| GAKA M6 | M 6 | 12 | 37 | 17 | 6 | 44 | 12 | 6 | 15 | 25 |
| GAKA M8 | M 8 | 16 | 47 | 22 | 8 | 57 | 16 | 8 | 20 | 32 and 40 |
| GAKA M10 | M 10 | 20 | 57 | 27 | 10 | 69 | 20 | 10 | 25 | 50 and 63 |
| GAKA M16 | M 16 | 32 | 89 | 42 | 16 | 108 | 32 | 16 | 40 | 80 |
| GAKA M20 | M 20 | 40 | 109 | 50 | 20 | 134 | 40 | 20 | 50 | 100 |



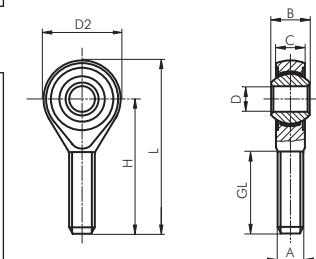
Swivel heads (male threads)

for compact cylinder - SQ

Materials: Type zinc-plated steel: Housing: Zinc-plated steel, bearing: Brass/PTFE, inside ring: 100Cr6
Type stainless steel: Housing: AISI 304, bearing: AISI 304/PTFE, inside ring: AISI 420

| Type zinc-plated steel | Type stainless steel | A | B | C | D | D2 | H | L | GL | For cylinder Ø |
|------------------------|----------------------|------|----|------|----|----|----|-----|----|----------------|
| SGSA M3* | --- | M 3 | 6 | 4.5 | 3 | 14 | 26 | 33 | 15 | 12 |
| SGSA M4 | --- | M 4 | 7 | 5.25 | 4 | 14 | 30 | 37 | 19 | 16 |
| SGSA M5 | SGSA M5 ES | M 5 | 8 | 6.0 | 5 | 18 | 33 | 42 | 19 | 20 |
| SGSA M6 | SGSA M6 ES | M 6 | 9 | 6.75 | 6 | 20 | 36 | 46 | 21 | 25 |
| SGSA M8 | SGSA M8 ES | M 8 | 12 | 9.0 | 8 | 24 | 42 | 54 | 25 | 32 and 40 |
| SGSA M10 | SGSA M10 ES | M 10 | 14 | 10.5 | 10 | 28 | 48 | 62 | 28 | 50 and 63 |
| SGSA M16 | SGSA M16 ES | M 16 | 21 | 15.0 | 16 | 42 | 66 | 87 | 37 | 80 |
| SGSA M20 | SGSA M20 ES | M 20 | 25 | 19.0 | 20 | 50 | 78 | 103 | 45 | 100 |

* storage: bronze, re-lubricate using the grease nipple



Valves

Of other manufacturers can be found in our Online Shop.

Simply look for the original item number!



Cylinders

Of other manufacturers can be found in our Online Shop.

Simply look for the original item number!

