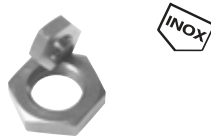


Compact cylinders - NXD/NXE - accessories

Piston rod nuts

for compact cylinders

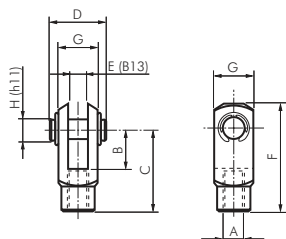


Type zinc-plated steel	Type V4A (stainless steel) INOX	Thread	SW	For cylinder Ø
GM 6 ST	GM 6 ES	M 6	10	12
GM 8 ST	GM 8 ES	M 8	13	16
GM 10125 ST	GM 10125 ES	M 10 x 1.25	17	20 to 40
GM 12125 ST	GM 12125 ES	M 12 x 1.25	19	50 and 63
GM 1615 ST	GM 1615 ES	M 16 x 1.5	24	80
GM 2015 ST	GM 2015 ES	M 20 x 1.5	30	100

Yokes with bolts

for compact cylinders

Optional: Material AISI 316Ti -ES 4A

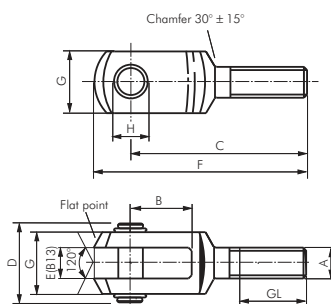


Type zinc-plated steel	Type AISI 303* INOX	A	B	C	D	E	F	G	H	For cylinder Ø
GAK 12/16	GAK 12/16 ES	M 6	12	24	16	6	31	12	6	12
GAK 20	GAK 20 ES	M 8	16	32	23	8	42	16	8	16
GAK 25/32	GAK 25/32 ES	M 10 x 1.25	20	40	27	10	52	20	10	20 to 40
GAK 40	GAK 40 ES	M 12 x 1.25	24	48	33	12	62	24	12	50 and 63
GAK 50/63	GAK 50/63 ES	M 16 x 1.5	32	64	43	16	83	32	16	80
GAK 80/100	GAK 80/100 ES	M 20 x 1.5	40	80	51	20	105	40	20	100

* type stainless steel can optically differ from the drawing

Yokes (male threads) with bolts

for compact cylinders

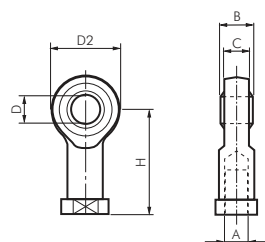


Type zinc-plated steel	A	B	C	D	E	F	G	H	GL	For cylinder Ø
GAKA M6	M 6	12	37	17	6	44	12	6	15	32 and 40
GAKA M8	M 8	16	47	22	8	57	16	8	20	50 and 63
GAKA M10	M 10	20	57	27	10	69	20	10	25	80
GAKA M12	M 12	24	68	33	12	82	24	12	30	100

Swivel heads

for compact cylinders

Materials: Type zinc-plated steel: Housing: Zinc-plated steel, bearing: Brass/PTFE, inside ring: 100Cr6
Type stainless steel: Housing: AISI 304, bearing: AISI 304/PTFE, inside ring: AISI 420



Type zinc-plated steel	Type stainless steel INOX	A	B	C	D	D2	L	H	For cylinder Ø
SGS 12/16	SGS 12/16 ES	M 6	9	6.75	6	20	12	30	12
SGS 20	SGS 20 ES	M 8	12	9.0	8	24	16	36	16
SGS 25/32	SGS 25/32 ES	M 10 x 1.25	14	10.5	10	28	20	43	20 to 40
SGS 40	SGS 40 ES	M 12 x 1.25	16	12.0	12	32	22	50	50 and 63
SGS 50/63	SGS 50/63 ES	M 16 x 1.5	21	15.0	16	42	28	64	80
SGS 80/100	SGS 80/100 ES	M 20 x 1.5	25	18.0	20	50	33	77	100

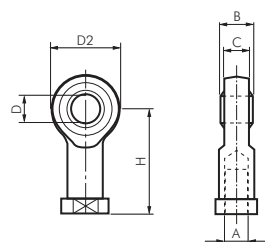
Swivel heads made of plastic

for compact cylinders

Material: High performance polymer, self lubricating

Temperature range: -40°C to max. +80°C

Operating range: Wet environments, weak acids and alkalis, water, extreme dirt



Type	A	B	C	D	D2	L	H	For cylinder Ø
SGS 12/16 KU	M 6	9	7.0	6	20	12	30	12
SGS 20 KU	M 8	12	9.0	8	24	16	36	16
SGS 25/32 KU	M 10 x 1.25	14	10.5	10	28	20	43	20 to 40
SGS 40 KU	M 12 x 1.25	16	12.0	12	34	24	50	50 and 63
SGS 50/63 KU	M 16 x 1.5	21	15.0	16	42	31	64	80
SGS 80/100 KU	M 20 x 1.5	25	18.0	20	50	33	77	100