

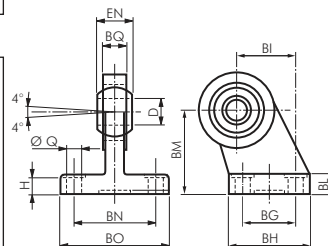
Compact cylinders ISO 21287 - accessories

Swivel fastening 90° spherical clips

for compact cylinder ISO 21287

Warning: Only use FFQ bolts to connect to TQ types!

Type steel/ GGG	Type AISI 316	Ø Q	BG	BH	BI	BL	BM	BN	BO	EN	BQ	Ø D	H	For cylinder Ø
TF 32	TF 32 ES	6.6	18	31	21	10	32	38	51	14	10.5	10	8.5	32
TF 40	TF 40 ES	6.6	22	35	24	10	36	41	54	16	12.0	12	8.5	40
TF 50	TF 50 ES	9.0	30	45	33	12	45	50	65	21	15.0	16	10.5	50
TF 63	TF 63 ES	9.0	35	50	37	12	50	52	67	21	15.0	16	10.5	63
TF 80	TF 80 ES	11.0	40	60	47	14	63	66	86	25	18.0	20	11.5	80
TF 100	TF 100 ES	11.0	50	70	55	15	71	76	96	25	18.0	20	12.5	100



Bolts for swivel fastenings

for compact cylinder ISO 21287

Supply volume: Bolts complete with compression ring and cotter pins

Type zinc-plated steel	Type AISI 316	A	B	D	For cylinder Ø
FF 32	FF 32 ES	46.0	53	10	32
FF 40	FF 40 ES	53.0	60	12	40
FF 50	FF 50 ES	61.0	68	12	50
FF 63	FF 63 ES	71.0	78	16	63
FF 80	FF 80 ES	91.0	98	16	80
FF 100	FF 100 ES	111.0	118	20	100

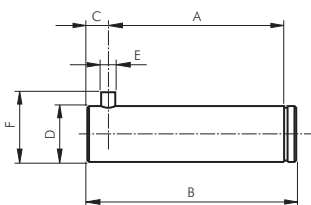


Bolts for spherical clips

for compact cylinder ISO 21287

Supply volume: Bolts complete with compression rings

Type zinc-plated steel	Type AISI 316	A	B	C	Ø D	E	F	For cylinder Ø
FFQ 32	FFQ 32 ES	32.5	41	4.5	10	3	14	32
FFQ 40	FFQ 40 ES	38.0	48	6.0	12	4	16	40
FFQ 50	FFQ 50 ES	43.0	54	6.0	16	4	20	50
FFQ 63	FFQ 63 ES	49.0	60	6.0	16	4	20	63
FFQ 80	FFQ 80 ES	63.0	75	6.0	20	4	24	80
FFQ 100	FFQ 100 ES	73.0	85	6.0	20	4	24	100



Cylinder switches for cylinders with continuous T-groove

Materials: Body: Plastic, threaded part: Brass, screw: Stainless steel

Connecting line: PUR cable

Protection class: IP 67

Temperature range: -20°C to max. +70°C

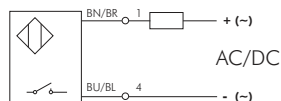
Note: The proximity switch with light emitting diode is used for the contactless position indicator of cylinders with magnetic pistons. It is mounted by pushing it in the T-groove of the cylinder and locking it using the threaded rod.
Suitable: For cylinder ISO 15552: XL/XLE, compact cylinder: NXE/NXD compact cylinder ISO 21287: NAE/NAD/SFS, rodless cylinder: LZ (Ø 18 mm only with clamp ZSAB2 5), guide cylinder: ZDFM and other cylinders with continuous T-groove

- Advantages:**
- No mounting material required.
 - Only one switch for many cylinders

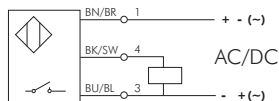


type ZSA 12

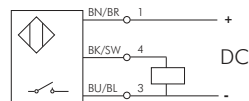
Type	Operating voltage	Switching	Max. switching current/performance	PUR connection line
2-wire reed sensor				
ZSA 12	10-230V AC	NO contact	150 mA/10 W	3 m, 2 x 0.14 mm ²
ZSA 12-M8	10-170V DC	NO contact	150 mA/10 W	0.2 m, 2 x 0.14 mm ²
	10-60V AC	NO contact	150 mA/10 W	With cable plug M 8
	10-75V DC			
3-wire reed sensor				
ZSA 13	10-30V AC/DC	NO contact (PNP)	500 mA/10 W	3 m, 3 x 0.14 mm ²
ZSA 13-M8	10-30V AC/DC	NO contact (PNP)	500 mA/10 W	0.2 m, 3 x 0.14 mm ²
				With cable plug M 8
fully electronic sensor (reverse polarity protection)				
ZSA 33	10-30V DC	NO contact (PNP)	130 mA/4 W	3 m, 3 x 0.14 mm ²
ZSA 33-M8	10-30V DC	NO contact (PNP)	130 mA/4 W	0.2 m, 3 x 0.14 mm ²
				With cable plug M 8



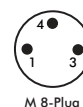
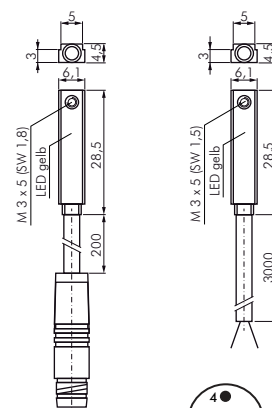
ZSA 12/ZSA 12-M8



ZSA 13/ZSA 13-M8



ZSA 33/ZSA 33-M8



M 8-Plug