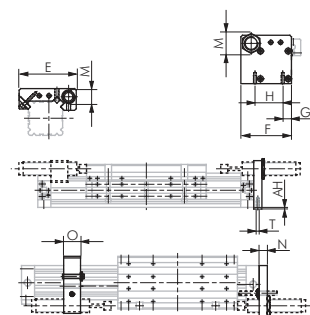


Stoppers for rodless guide cylinders

Application: Depending on the applications, you can choose between a fixed or an adjustable stop. The adjustable stop can be moved freely in the cylinder tube. Each stop has a limit-stop screw as well as a female thread to receive a shock absorber (see below on this side). Stops can only be used with a guide cylinder LZF, LZKF.

Type fixed stop	Type adjustable stop	AH	E	F	G	H	M	N	O	T x deep	For cylinder Ø
LZ 18 AS ²⁾	LZ 18 ASV ¹⁾	2.0	57	43.5	8.0	23.5	M 14 x 1.5*	8	15	M 3 x 10	18
LZ 25 AS ²⁾	LZ 25 ASV ¹⁾	2.0	72	57.0	12.5	33.0	M 14 x 1.5	10	20	M 4 x 10	25
LZ 32 AS ²⁾	LZ 32 ASV ¹⁾	3.0	84	70.0	14.5	41.0	M 14 x 1.5	12	20	M 5 x 12	32
LZ 40 AS ²⁾	LZ 40 ASV ¹⁾	3.0	105	93.0	16.0	51.0	M 25 x 1.5	15	30	M 6 x 15	40
LZ 50 AS ²⁾	LZ 50 ASV ¹⁾	3.0	126	102.0	22.5	63.0	M 25 x 1.5	15	30	M 8 x 20	50
LZ 63 AS ²⁾	LZ 63 ASV ¹⁾	4.5	140	118.5	20.0	78.0	M 25 x 1.5	15	40	M 8 x 20	63

matching shock absorber: ¹⁾ MA 50 EUM, ²⁾ MA 150 EUM, ³⁾ MA 600 EUM, * type LZ 18 ASV: thread M 10 x 1



type LZ ... ASV

type LZ ... AS

Adjustable shock absorbers for rodless cylinders

Materials: Shock absorber body and accessory: Steel burnished, piston rod: Hardened, stainless steel.

Temperature range: 0 to +66°C

Stroke speed: 0.3 to 3.6 m/s

Fixed limit stop: Integrated

Type shock absorber	Max. energy consumption		Effective mass (me) adjustable	Spring force	To use with cylinders Ø
	Per stroke (W3)	Per hour (W4)			
MA 50 EUM	5.5 Nm	5,100 Nm	4.5 - 20 kg	3 - 6 N	18*
MA 150 EUM	22 Nm	35,000 Nm	1 - 109 kg	3 - 5 N	18 - 32
MA 600 EUM	68 Nm	68,000 Nm	9.0 - 1,350 kg	10 - 30 N	40 - 63

* sliding connection only



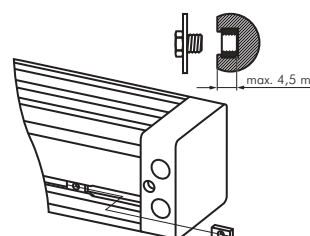
Exceeding W4 (max. energy consumed per hour expressed in Nm/h) is possible in the case of temporary switched off, or when the shock absorber is cooled with the cylinder exhaust air.



Assembly nuts for assemblies on cylinders with T-groove

Application: The assembly nut is inserted in the T-groove of the cylinder and is such that an M5 screw can be positioned wherever desired. The nut is suitable for mounting assemblies directly on the cylinders. When using this, it is not possible to mount the cylinder itself.

Type	Thread	Nut height	Length x width	For cylinder Ø
LZ GM	M 5	3.5 mm	12 x 6.5	25 - 63



Cylinder switches for cylinders with continuous T-groove

Materials: Body: Plastic, threaded part: Brass, screw: Stainless steel

Connecting line: PUR cable

Protection class: IP 67

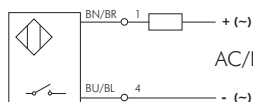
Temperature range: -20°C to max. +70°C

Note: The proximity switch with light emitting diode is used for the contactless position indicator of cylinders with magnetic pistons. It is mounted by pushing it in the T-groove of the cylinder and locking it using the threaded rod.

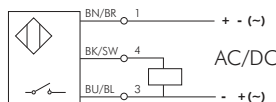
Suitable: For cylinder ISO 15552: XL/XLE, compact cylinder: NXE/NXD compact cylinder ISO 21287: NAE/NAD/SFS, rodless cylinder: LZ (Ø 18 mm only with clamp ZSAB2 5), guide cylinder: ZDFM and other cylinders with continuous T-groove

- ✓ **Advantages:**
- No mounting material required.
 - Only one switch for many cylinders

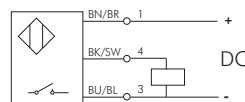
Type	Operating voltage	Switching	Max. switching current/performance	PUR connection line
2-wire reed sensor				
ZSA 12	10-230V AC 10-170V DC	NO contact	150 mA/10 W	3 m, 2 x 0.14 mm ²
ZSA 12-M8	10-60V AC 10-75V DC	NO contact	150 mA/10 W	0.2 m, 2 x 0.14 mm ² With cable plug M 8
3-wire reed sensor				
ZSA 13	10-30V AC/DC	NO contact (PNP)	500 mA/10 W	3 m, 3 x 0.14 mm ²
ZSA 13-M8	10-30V AC/DC	NO contact (PNP)	500 mA/10 W	0.2 m, 3 x 0.14 mm ² With cable plug M 8
fully electronic sensor (reverse polarity protection)				
ZSA 33	10-30V DC	NO contact (PNP)	130 mA/4 W	3 m, 3 x 0.14 mm ²
ZSA 33-M8	10-30V DC	NO contact (PNP)	130 mA/4 W	0.2 m, 3 x 0.14 mm ² With cable plug M 8



ZSA 12/ZSA 12-M8

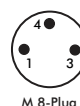
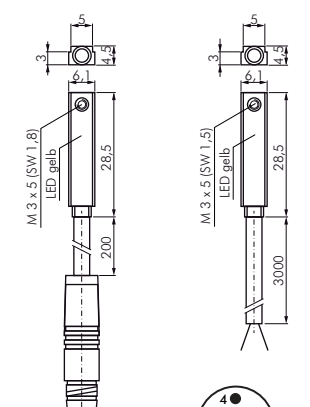


ZSA 13/ZSA 13-M8



ZSA 33/ZSA 33-M8

type ZSA 12



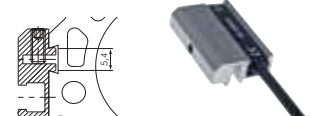
Fixing clamps for cylinder switches (T-groove)

for cylinder with dovetail groove

Material: Aluminium anodised

Suitable: For mounting cylinder switches type ZSA 12, 12-M8, 13, 13-M8, 33, 33-M8 on cylinders with dovetail groove (e.g.. LZ...).

Type	Dovetail slot width S
ZSAB2 5	5.4



All data are considered to be unbinding reference values. We accept no liability for data selection that is not confirmed in writing. Pressure data refer, if not otherwise indicated, to liquids of Group II at +20°C.