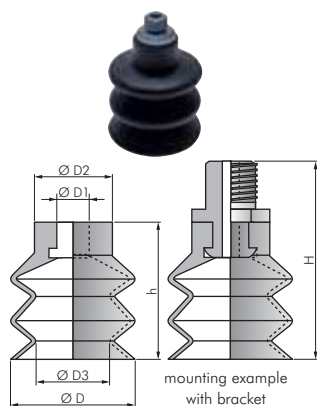


# Vacuum suction



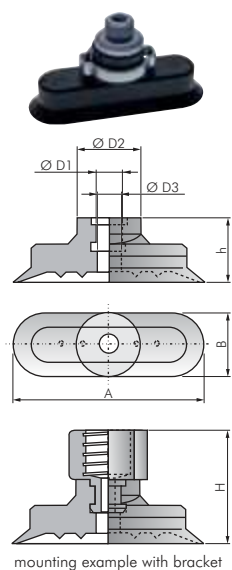
## Bellows suction pads, 2.5 times

Ø 10 - 40 mm

Type NBR (55A) (black)	Type silicone (60A) (red)	Type polyurethane (55A) (blue)	Connection								Bracket type
D	Stroke	FT/MT	D1	D2	D3	h	H				
VS 10 B2 NBR	VS 10 B2 Si	---	9.3	3	G 1/8"	5	10	5	15.5	27	F
VS 14 B2 NBR	VS 14 B2 Si	VS 14 B2 PUR	14.0	10	G 1/8"	5	12	6	23.0	35	F
VS 18 B2 NBR	VS 18 B2 Si	VS 18 B2 PUR	18.0	8	G 1/8"	5	12	7	22.0	34	F
VS 30 B2 NBR	VS 30 B2 Si	VS 30 B2 PUR	30.0	13	G 1/4"	8	19	12	33.0	48	G
VS 40 B2 NBR	VS 40 B2 Si	VS 40 B2 PUR	40.0	20	G 1/4"	8	19	18	45.0	60	G

Suitable bracket (must be ordered separately)

Type aluminium	Thread connector	Type aluminium	Thread connector	DN	Bracket type
VSH F18 i	G 1/8" FT	VSH F18	G 1/8" MT	4	F
VSH G14 i	G 1/4" FT	VSH G14	G 1/4" MT	4	G



## Oval suction

15 - 100 mm

Supply volume: 1 pc. suction cup with ear clamp for attachment on bracket

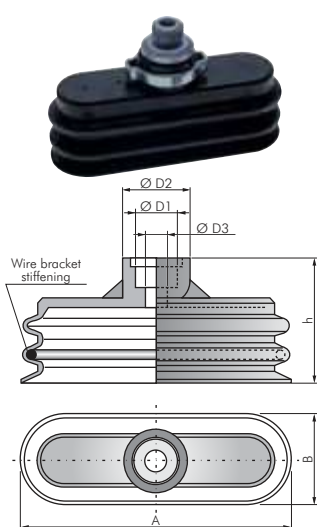
Type NBR (60A) (grey)	Type silicone (60A) (transparent)	Type polyurethane (65A) (blue)	A x B	Stroke	h	H**	D1	D2	D3	Bracket type
VS 15x5 O NBR	VS 15x5 O Si	---	15 x 5	1	12	22	5	9	2.0	H
VS 18x6 O NBR	VS 18x6 O Si	VS 18x6 O PUR	18 x 6	1	12	22	5	9	2.0	H
VS 24x8 O NBR	VS 24x8 O Si	VS 24x8 O PUR	24 x 8	1	12	22	5	12	3.0	H
VS 30x10 O NBR	VS 30x10 O Si	VS 30x10 O PUR	30 x 10	2	12	22	5	12	3.5	H
VS 36x12 O NBR	VS 36x12 O Si	VS 36x12 O PUR	36 x 12	2	12	22	5	12	4.5	H
VS 45x15 O NBR	VS 45x15 O Si	VS 45x15 O PUR	45 x 15	3	21	33	12	17	4.0	K
VS 60x20 O NBR	VS 60x20 O Si	VS 60x20 O PUR <sup>3)</sup>	60 x 20	3	21	33	12	17	4.0	K
VS 75x25 O NBR <sup>1)</sup>	VS 75x25 O Si <sup>2)</sup>	---	75 x 25	3	22	34	12	18	4.0	K
VS 100x35 O NBR <sup>1)</sup>	---	---	100 x 35	3	22	34	12	18	7.5	K

Suitable bracket (must be ordered separately)

Type aluminium	Thread connector	Type aluminium	Thread connector	Type aluminium	Thread connector	DN	Bracket type
VSH H18 i	G 1/8" FT	VSH H18	G 1/8" MT	VSH H50	M 5 MT	3/2.4	H
VSH K14 i	G 1/4" FT	VSH K14	G 1/4" MT	---	---	6.5	K

\* delivered with aluminium reinforcement \*\* male thread G 1/8" and G 1/4" plus 4 mm

<sup>1)</sup> black, <sup>2)</sup> red, <sup>3)</sup> beige/brown



## Oval suction pads, 2.5 times

25 - 75 mm

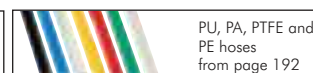
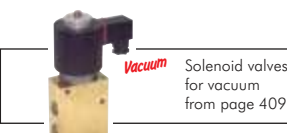
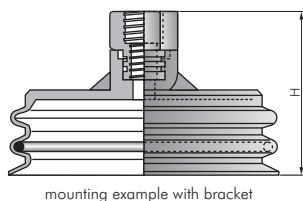
Supply volume: 1 pc. suction cup with ear clamp for attachment on bracket

Type NBR (60A) (grey)	Type silicone (60A) (transparent)	A x B	Stroke	h	H*	D1	D2	D3	Bracket type
VS 25x8 O2 NBR	VS 25x8 O2 Si	25 x 8	6.0	18.5	28.5	5	10.0	2.5	H
VS 45x15 O2 NBR	VS 45x15 O2 Si	45 x 15	8.5	28.5	40.5	12	17.5	5.0	K
VS 75x25 O2 NBR	VS 75x25 O2 Si	75 x 25	10.5	34.5	46.5	12	17.5	6.0	K

Suitable bracket (must be ordered separately)

Type aluminium	Thread connector	Type aluminium	Thread connector	Type aluminium	Thread connector	DN	Bracket type
VSH H18 i	G 1/8" FT	VSH H18	G 1/8" MT	VSH H50	M 5 MT	3/2.4	H
VSH K14 i	G 1/4" FT	VSH K14	G 1/4" MT	---	---	6.5	K

\* male thread G 1/8" and G 1/4" plus 4 mm



All data are considered to be unbinding reference values. We accept no liability for data selection that is not confirmed in writing. Pressure data refer, if not otherwise indicated, to liquids of Group II at +20°C.