

IQS push in connections - MSV

1



Dimensions can be found in the item details in our Online Shop!

IQS one-way control valves made of nickel-plated brass

MSV

Materials: Body and sleeve: Nickel-plated brass, seals: NBR/plastic, holding claws: Stainless steel (only silicone-free seals and lubricants are used during assembly)

Temperature range: -20°C to max. +80°C. **Operating pressure:** 0.2 to 10 bar

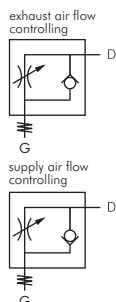
Media: Oiled and unoled compressed air, neutral, non-hazardous gasses

Functional principle: Flow control silencers choke the flow in one direction, while the flow remains unrestricted in the other direction. The standard construction of the flow control silencers is "exhaust air flow controlling". If they are screwed into a cylinder, for example, then they provide for an even flow without causing a slip-stick effect. In the case of cylinders with small volumes (a small diameter/low stroke rate), flow control silencers are utilised with the special "supply air flow controlling" construction.

One-way control valves with slotted screw, banjo bolt design

MSV

✓ **Advantages:** • Stable design • Can only be adjusted using screwdriver • Outstanding value • Largest variety

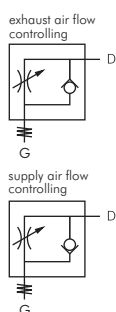


Type exhaust air flow controlling	Type supply air flow controlling	G	D
GRLAIQS M54 H MSV	GRLBIQS M54 H MSV	M 5	4
GRLAIQS M56 H MSV	GRLBIQS M56 H MSV	M 5	6
GRLAIQS 184 H MSV	GRLBIQS 184 H MSV	G 1/8"	4
GRLAIQS 186 H MSV	GRLBIQS 186 H MSV	G 1/8"	6
GRLAIQS 188 H MSV	GRLBIQS 188 H MSV	G 1/8"	8
GRLAIQS 146 H MSV	GRLBIQS 146 H MSV	G 1/4"	6
GRLAIQS 148 H MSV	GRLBIQS 148 H MSV	G 1/4"	8
GRLAIQS 1410 H MSV	GRLBIQS 1410 H MSV	G 1/4"	10
GRLAIQS 388 H MSV	GRLBIQS 388 H MSV	G 3/8"	8
GRLAIQS 3810 H MSV	GRLBIQS 3810 H MSV	G 3/8"	10

One-way control valves with slotted screw

MSV

✓ **Advantages:** • Stable, compact design • Cylindrical screw in threads sealed by captive O-ring • Can only be adjusted using screwdriver

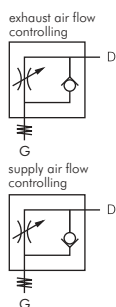


Type exhaust air flow controlling	Type supply air flow controlling	G	D
GRLAIQS 184 S MSV	GRLBIQS 184 S MSV	G 1/8"	4
GRLAIQS 186 S MSV	GRLBIQS 186 S MSV	G 1/8"	6
GRLAIQS 188 S MSV	GRLBIQS 188 S MSV	G 1/8"	8
GRLAIQS 146 S MSV	GRLBIQS 146 S MSV	G 1/4"	6
GRLAIQS 148 S MSV	GRLBIQS 148 S MSV	G 1/4"	8
GRLAIQS 1410 S MSV	GRLBIQS 1410 S MSV	G 1/4"	10
GRLAIQS 1412 S MSV	GRLBIQS 1412 S MSV	G 1/4"	12

One-way control valves with knurled screw

MSV

✓ **Advantages:** • Stable, compact design • Cylindrical screw in threads sealed by captive O-ring • Can be easily adjusted without tools

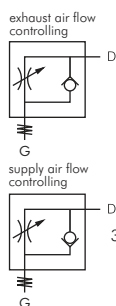


Type exhaust air flow controlling	Type supply air flow controlling	G	D
GRLAIQS M54 MSV	GRLBIQS M54 MSV	M 5	4
GRLAIQS M56 MSV	GRLBIQS M56 MSV	M 5	6
GRLAIQS 184 MSV	GRLBIQS 184 MSV	G 1/8"	4
GRLAIQS 186 MSV	GRLBIQS 186 MSV	G 1/8"	6
GRLAIQS 188 MSV	GRLBIQS 188 MSV	G 1/8"	8
GRLAIQS 146 MSV	GRLBIQS 146 MSV	G 1/4"	6
GRLAIQS 148 MSV	GRLBIQS 148 MSV	G 1/4"	8
GRLAIQS 1410 MSV	GRLBIQS 1410 MSV	G 1/4"	10

One-way control valves with slotted screw - straight form

MSV

✓ **Advantages:** • Stable, compact design • Cylindrical screw in threads sealed by captive O-ring • Can be easily adjusted without tools



Type exhaust air flow controlling	Type supply air flow controlling	G	D
GRAIQS 184 MSV	GRBIQS 184 MSV	G 1/8"	4
GRAIQS 186 MSV	GRBIQS 186 MSV	G 1/8"	6
GRAIQS 188 MSV	GRBIQS 188 MSV	G 1/8"	8
GRAIQS 146 MSV	GRBIQS 146 MSV	G 1/4"	6
GRAIQS 148 MSV	GRBIQS 148 MSV	G 1/4"	8

Check valves

MSV

Materials: Body and sleeve: Nickel-plated brass, seals: NBR, holding claws: Stainless steel (only silicone-free seals and lubricants are used during assembly)

Temperature range: -20°C to max. +80°C

Operating pressure: 0.2 to 10 bar

Media: Oiled and unoled compressed air, neutral and non-hazardous gasses

Type	D
HIQS 40 MSV	4
HIQS 60 MSV	6
HIQS 80 MSV	8

All data are considered to be unbinding reference values. We accept no liability for data selection that is not confirmed in writing. Pressure data refer, if not otherwise indicated, to liquids of Group II at +20°C.