

Steel & stainless steel cutting ring fittings ISO 8434-1

Straight screw-in connections with elastomer seal (metric)

Type zinc-plated steel	Type AISI 316Ti	Type compr. ring AISI 316Ti (NC)	Tube Ø external	Screw-in thread
Light model series				
GE 6 LM ED	GE 6 LM ES ED	GE 6 LM NC ED	6 L	M 10 x 1
GE 8 LM ED	GE 8 LM ES ED	GE 8 LM NC ED	8 L	M 12 x 1.5
GE 10 LM ED	GE 10 LM ES ED	GE 10 LM NC ED	10 L	M 14 x 1.5
---	GE 10 LM M12 ES ED	GE 10 LM M12 NC ED	10 L	M 12 x 1.5
GE 10 LM M16 ED	GE 10 LM M16 ES ED	GE 10 LM M16 NC ED	10 L	M 16 x 1.5
GE 10 LM M18 ED	---	---	10 L	M 18 x 1.5
GE 10 LM M22 ED	---	---	10 L	M 22 x 1.5
GE 12 LM ED	GE 12 LM ES ED	GE 12 LM NC ED	12 L	M 16 x 1.5
GE 12 LM M14 ED	---	---	12 L	M 14 x 1.5
GE 12 LM M18 ED	---	---	12 L	M 18 x 1.5
GE 12 LM M22 ED	---	---	12 L	M 22 x 1.5
GE 15 LM ED	GE 15 LM ES ED	GE 15 LM NC ED	15 L	M 18 x 1.5
GE 15 LM M16 ED	---	---	15 L	M 16 x 1.5
GE 15 LM M22 ED	---	---	15 L	M 22 x 1.5
GE 18 LM ED	GE 18 LM ES ED	GE 18 LM NC ED	18 L	M 22 x 1.5
GE 18 LM M18 ED	---	---	18 L	M 18 x 1.5
GE 22 LM ED	GE 22 LM ES ED	GE 22 LM NC ED	22 L	M 26 x 1.5
GE 22 LM M22 ED	---	---	22 L	M 22 x 1.5
GE 28 LM ED	GE 28 LM ES ED	---	28 L	M 33 x 2
GE 35 LM ED	GE 35 LM ES ED	---	35 L	M 42 x 2
GE 42 LM ED	GE 42 LM ES ED	---	42 L	M 48 x 2
Heavy model series				
GE 6 SM ED	GE 6 SM ES ED	GE 6 SM NC ED	6 S	M 12 x 1.5
---	GE 6 SM M14 ES ED	GE 6 SM M14 NC ED	6 S	M 14 x 1.5
GE 8 SM ED	GE 8 SM ES ED	GE 8 SM NC ED	8 S	M 14 x 1.5
GE 10 SM ED	GE 10 SM ES ED	GE 10 SM NC ED	10 S	M 16 x 1.5
GE 12 SM ED	GE 12 SM ES ED	GE 12 SM NC ED	12 S	M 18 x 1.5
---	GE 12 SM M14 ES ED	GE 12 SM M14 NC ED	12 S	M 14 x 1.5
GE 14 SM ED	GE 14 SM ES ED	GE 14 SM NC ED	14 S	M 20 x 1.5
GE 16 SM ED	GE 16 SM ES ED	GE 16 SM NC ED	16 S	M 22 x 1.5
GE 20 SM ED	GE 20 SM ES ED	GE 20 SM NC ED	20 S	M 27 x 2
GE 25 SM ED	GE 25 SM ES ED	GE 25 SM NC ED	25 S	M 33 x 2
GE 30 SM ED	GE 30 SM ES ED	---	30 S	M 42 x 2
GE 38 SM ED	GE 38 SM ES ED	---	38 S	M 48 x 2

Thread: **METRIC**

Elastomer seal

elastomer seal

imperial on page 80



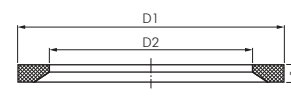
Type with Elastomer seal

INOX

Profiled gaskets made of NBR/FKM for cutting ring fittings

DIN 3869

Type NBR (-35°C up to max. +100°C)	Type FKM (-15°C up to max. +200°C)	For threads	D1	D2	s
Metric					
DR M10 ED NBR	DR M10 ED V	M 10 x 1	11.9	8.4	1.0
DR M12 ED NBR	DR M12 ED V	M 12 x 1.5	14.4	9.8	1.5
DR M14 ED NBR	DR M14 ED V	M 14 x 1.5	16.5	11.6	1.5
DR M16 ED NBR	DR M16 ED V	M 16 x 1.5	18.9	13.8	1.5
DR M18 ED NBR	DR M18 ED V	M 18 x 1.5	20.9	15.7	1.5
DR M20 ED NBR	DR M20 ED V	M 20 x 1.5	22.9	17.8	1.5
DR M22 ED NBR	DR M22 ED V	M 22 x 1.5	24.3	19.6	1.5
DR M26 ED NBR	DR M26 ED V	M 26 x 1.5	29.2	23.9	1.5
DR M27 ED NBR	DR M27 ED V	M 27 x 2	29.2	23.9	1.5
DR M33 ED NBR	DR M33 ED V	M 33 x 2	35.7	29.7	2.0
DR M42 ED NBR	DR M42 ED V	M 42 x 2	45.8	38.8	2.0
DR M48 ED NBR	DR M48 ED V	M 48 x 2	50.7	44.7	2.0
Imperial					
DR 18 ED NBR	DR 18 ED V	G 1/8"	11.9	8.4	1.0
DR 14 ED NBR	DR 14 ED V	G 1/4"	16.5	11.6	1.5
DR 38 ED NBR	DR 38 ED V	G 3/8"	18.9	14.7	1.5
DR 12 ED NBR	DR 12 ED V	G 1/2"	23.9	18.5	1.5
DR 34 ED NBR	DR 34 ED V	G 3/4"	29.2	23.9	1.5
DR 10 ED NBR	DR 10 ED V	G 1"	35.7	29.7	2.0
DR 114 ED NBR	DR 114 ED V	G 1 1/4"	45.8	38.8	2.0
DR 112 ED NBR	DR 112 ED V	G 1 1/2"	50.7	44.7	2.0



Ready-made washing
and hydraulic hoses
on page 231



Aluminium, copper
and steel pipes
from page 250



LOCTITE
Liquid seals,
gaskets & tapes
from page 549



Hydraulic couplings
from page 170



HYDAC
Pipe clamps
from page 244

All data are considered to be unbinding reference values. We accept no liability for data selection that is not confirmed in writing. Pressure data refer, if not otherwise indicated, to liquids of Group II at +20°C.