

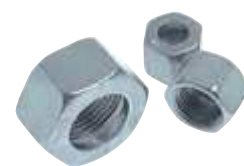
Steel & stainless steel cutting ring fittings ISO 8434-1

Union nuts

DIN 3870

Type zinc-plated steel	Type AISI 316Ti	Type compr. ring AISI 316Ti (NC)	Tube Ø external	Thread
Very light model series				
M 4 LL	M 4 LL ES	---	4 LL	M 8 x 1
M 5 LL	---	---	5 LL	M 10 x 1
M 6 LL	M 6 LL ES	---	6 LL	M 10 x 1
M 8 LL	M 8 LL ES	---	8 LL	M 12 x 1
M 10 LL	---	---	10 LL	M 14 x 1
M 12 LL	---	---	12 LL	M 16 x 1
Light model series				
M 6 L	M 6 L ES	M 6 L NC*	6 L	M 12 x 1.5
M 8 L	M 8 L ES	M 8 L NC*	8 L	M 14 x 1.5
M 10 L	M 10 L ES	M 10 L NC*	10 L	M 16 x 1.5
M 12 L	M 12 L ES	M 12 L NC*	12 L	M 18 x 1.5
M 15 L	M 15 L ES	M 15 L NC*	15 L	M 22 x 1.5
M 18 L	M 18 L ES	M 18 L NC*	18 L	M 26 x 1.5
M 22 L	M 22 L ES	M 22 L NC*	22 L	M 30 x 2
M 28 L	M 28 L ES	---	28 L	M 36 x 2
M 35 L	M 35 L ES	---	35 L	M 45 x 2
M 42 L	M 42 L ES	---	42 L	M 52 x 2
Heavy model series				
M 6 S	M 6 S ES	M 6 S NC*	6 S	M 14 x 1.5
M 8 S	M 8 S ES	M 8 S NC*	8 S	M 16 x 1.5
M 10 S	M 10 S ES	M 10 S NC*	10 S	M 18 x 1.5
M 12 S	M 12 S ES	M 12 S NC*	12 S	M 20 x 1.5
M 14 S	M 14 S ES	M 14 S NC*	14 S	M 22 x 1.5
M 16 S	M 16 S ES	M 16 S NC*	16 S	M 24 x 1.5
M 20 S	M 20 S ES	M 20 S NC*	20 S	M 30 x 2
M 25 S	M 25 S ES	M 25 S NC*	25 S	M 36 x 2
M 30 S	M 30 S ES	---	30 S	M 42 x 2
M 38 S	M 38 S ES	---	38 S	M 52 x 2

* not according to the DIN



Ready-made washing and hydraulic hoses on page 231

Functional nuts with assembled cutting ring and gasket

Parker

Functional nuts, zinc-plated steel, in lightweight and heavy-duty model series are found in the Online Shop:

Order example: M 6 LEO **

Standard type

Designation for the options:
With FKM seal-V

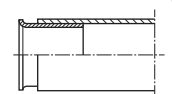
TIP Self-sealing union nuts, no cutting ring required!

Many additional products and sizes are available in our **Online Shop!**

Reinforcing rings / Tube support

Suitable: Reinforcing rings are installed for thin-walled steel pipes, copper pipes and plastic pipes when using cutting ring fittings and compression ring fittings.

Type brass	Type AISI 316Ti	For tubes Ø external	For tubes Ø internal
With collar			
VSH 4 x 2	VSH 4 x 2 ES	4	2
VSH 4 x 2,7	VSH 4 x 2,7 ES	4	2,7
VSH 5 x 3	---	5	3
VSH 6 x 4	VSH 6 x 4 ES	6	4
---	VSH 6 x 5 ES	6	5
---	VSH 8 x 5 ES	8	5
VSH 8 x 6	VSH 8 x 6 ES	8	6
VSH 10 x 7	VSH 10 x 7 ES	10	7
VSH 10 x 8	VSH 10 x 8 ES	10	8
VSH 12 x 9	VSH 12 x 9 ES	12	9
VSH 12 x 10	VSH 12 x 10 ES	12	10
VSH 14 x 11	---	14	11
VSH 14 x 12	VSH 14 x 12 ES	14	12
VSH 15 x 13	VSH 15 x 13 ES	15	13
VSH 16 x 14	VSH 16 x 14 ES	16	14
VSH 18 x 14	---	18	14
VSH 18 x 15	VSH 18 x 15 ES	18	15
VSH 18 x 16	---	18	16
VSH 20 x 16	---	20	16
VSH 20 x 18	---	20	18
VSH 22 x 18	---	22	18
VSH 22 x 20	---	22	20
VSH 28 x 25	---	28	25
With knurl, without collar			
VSHR 5	---	5	---
---	VSHR 11 ES	11	---
---	VSHR 16 ES	16	---
---	VSHR 18 ES	18	---
---	VSHR 20 ES	20	---
VSHR 22	VSHR 22 ES	22	---
---	VSHR 23 ES	23	---
---	VSHR 25 ES	25	---
VSHR 31	---	31	---
VSHR 38	VSHR 38 ES	38	---



screwed connection with reinforcing sleeve

All data are considered to be unbinding reference values. We accept no liability for data selection that is not confirmed in writing. Pressure data refer, if not otherwise indicated, to liquids of Group II at +20°C.