



Air Distribution Manifolds

AH34 Series



5-Station 316L Air Manifold - Valved Inlet - Left Aligned - Lockable - PED Approved.

Applications

- * Instrument Air distribution
- * Signal Air Isolation
- * Signal Air lock-out

Technical Specifications

Manifold Body:	316L-TP ASTM A312/ASME
Isolation Valves:	ASTM-A351-CF8M
Inlet Isolation Valve Port:	Rp 3/4" BSPT or NPT
Outlet Isolation Valve Port:	Rp 1/4" BSPT or NPT
Drain Valve Port:	Rp 1/4" BSPT or NPT
Stem Packing:	PTFE
Valve Stem:	316 Stainless Steel
Valve Sleeve:	Red Vinyl Plastic
End Fittings:	316L-TP ASTM A 276-10
Isolation Valves Certified:	PED 97/23/EC
Manifold Cert Compliance:	PED 97/23/EC

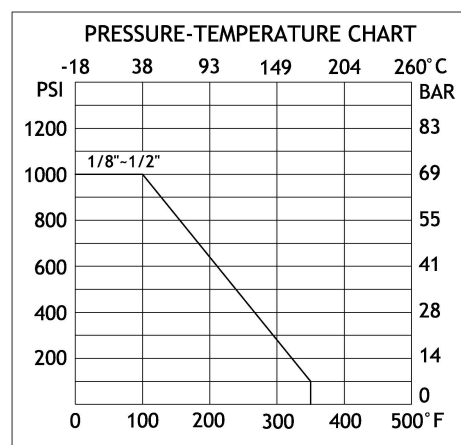
Operating Temperature:	-20 to +150°C
Working Pressure:	150 psi (10bar)
Factory Test Pressure:	215 psi (15bar)
Valve Pressure Rating:	See Graph

O.A.L. c/w Drain Valve:	470mm
O.A.L. w/o Drain Valve:	432mm
Isolation v/v Spacing:	50 mm
Surface Finish:	Standard Polish



Order Code Standard

Description	Part Number
5-Stn 316L Air Manifold	AH34RP5L-14RC2L
Left Aligned.	
Lockable.Valved Inlet.	



5-Station 316L Air Manifold - Valved Inlet - Left Aligned - Lockable - PED Approved

Product Features

Traceability: Each RCC Manifold carries a unique identifying code. This code provides a method for tracing materials and is an important part of quality assurance and control.

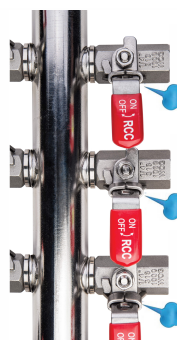
Output Connections: Rp 1/4", 316 Compression, Quick Fit.

Lockable: All RCC Manifolds are **LOTO** compliant.

Special products can be supplied to order. Manifolds fitted with valves to vent upstream pressure in accordance with **HAZOP** guidelines.

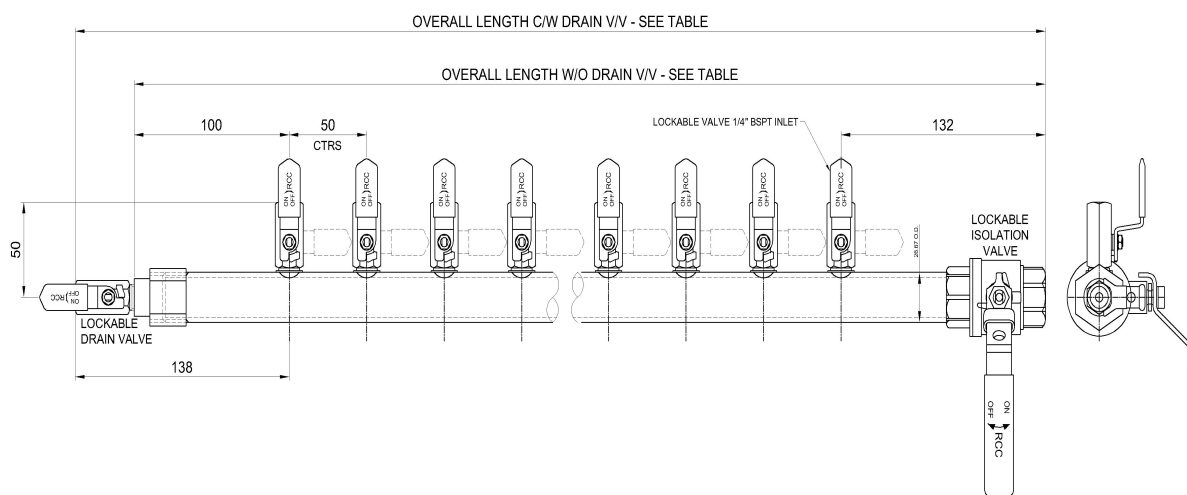
Order Code Venting

Description	Part Number
5-Strn 316 Air Manifold	AH34RP5L-14RV2L
Single Left Aligned.	
Lockable + Venting	



NO. OF OUTLETS SINGLE SIDE	OVERALL LENGTH IN mm W/O DRAIN V/V	OVERALL LENGTH IN mm C/W DRAIN V/V
2	282.0	320.0
3	332.0	370.0
4	382.0	420.0
5	432.0	470.0
6	482.0	520.0
7	532.0	570.0
8	582.0	620.0
9	632.0	670.0
10	682.0	720.0
11	732.0	770.0
12	782.0	820.0
13	832.0	870.0
14	882.0	920.0
15	932.0	970.0

NOTES:
MAX WORKING TEMPERATURE PTFE PACKING = 200°C
TESTED COLD WORKING PRESSURE = 15BAR
LOCKABLE VALVES WILL HAVE RED VINYL SLEEVES



Design and materials may change without notice



RCC IRL LTD
LEE VIEW PLACE,
MONKSTOWN,
CO. CORK
IRELAND

Email: sales@rccirl.ie

Phone: 00 353 21 4841562