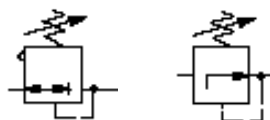


Air line equipment

Excelon modular system

R72G, R73G, R74G Pressure regulators

G $\frac{1}{4}$ to G $\frac{3}{4}$



Excelon design allows in-line or modular installation

Full flow gauge ports

Balanced valve design for optimum pressure control

Standard relieving models allow reduction of downstream pressure when the system is dead-ended

Push to lock adjusting knob with tamper resistant accessory

Manifold regulators can be banked together to provide numerous regulated pressures from a common primary pressure

Technical data

Medium:

Compressed air

Maximum inlet pressure:

20 bar

Gauge ports:

G $\frac{1}{8}$

Ambient temperature:

-34°C to +65°C (R72G)

-34°C to +80°C (R73G & R74G)

Consult our Technical Service for use below +2°C

Materials

R72G:

Body: zinc

Bonnet & bottom plug: acetal

Valve: brass

Elastomers: nitrile

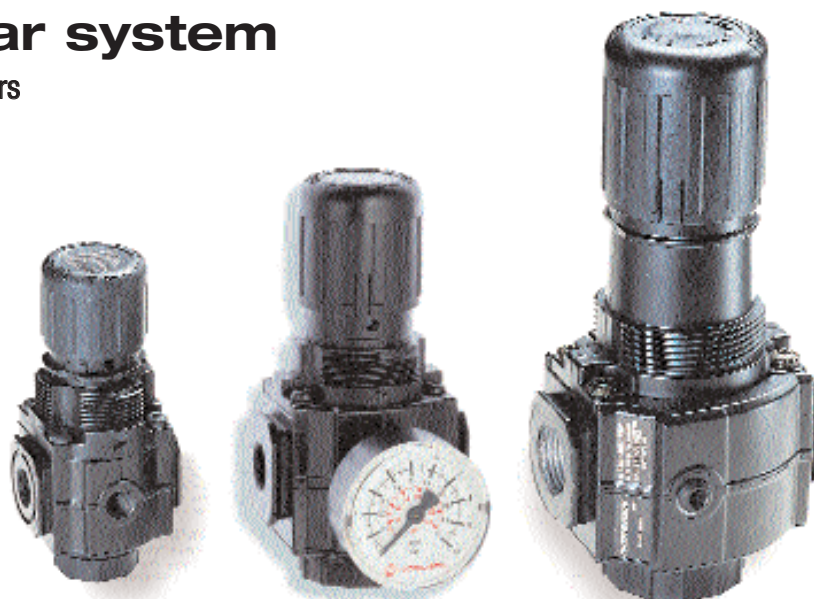
R73G & R74G:

Body & bonnet: aluminium

Valve: brass

Elastomers: nitrile

Bottom plug: acetal



R72G

R73G

R74G

Port size	Flow (dm ³ /s) #	kg	Model	Service kit
G $\frac{1}{4}$	33	0,36	R72G-2GK-RMN	4381-500
G $\frac{1}{4}$	50	0,48	R73G-2GK-RMN	4381-600
G $\frac{3}{8}$	33	0,36	R72G-3GK-RMN	4381-500
G $\frac{3}{8}$	60	0,48	R73G-3GK-RMN	4381-600
G $\frac{3}{8}$	98	0,82	R74G-3GK-RMN	4381-700
G $\frac{1}{2}$	60	0,48	R73G-4GK-RMN	4381-600
G $\frac{1}{2}$	105	0,80	R74G-4GK-RMN	4381-700
G $\frac{3}{4}$	105	0,78	R74G-6GK-RMN	4381-700

Models listed include unidirectional flow, ISO G threads, knob adjustment, relieving diaphragm, 0,3 to 10 bar outlet pressure adjustment range without gauge.

Typical flow with 10 bar inlet pressure, 6,3 bar set pressure and a 1 bar droop from set.

Options selector

R7★-★-★-★-★

Series	Substitute	Gauge	Substitute
72	2	With	G
73	3	Without	N
74	4		
Flow type	Substitute	Outlet pressure adjustment range*	Substitute
Uni-directional	G	0,3 ... 2 bar (72)	C
Reverse	R	0,3 ... 4 bar	F
Manifold (72 only)	M	0,3 ... 10 bar	M
		0,7 ... 17 bar** (73, 74)	S
Port size	Substitute	Diaphragm	Substitute
1/4" (72 & 73)	2	Relieving	R
3/8"	3	Non relieving	N
1/2" (73 & 74)	4		
3/4" (74)	6		
Threads	Substitute	Adjustment	Substitute
PTF	A	Knob	K
ISO Rc taper	B	T-bar	T
ISO G parallel	G		

*Outlet pressure can be adjusted to pressures in excess of, and less than, those specified. Do not use these units to control pressures outside of the specified ranges.

**Units with 17 bar outlet pressure range are available only with the T-bar adjustment; therefore substitute T at the 7th position and S at the 9th position.

R72M Manifold pressure regulators

These products allow inlet pressure to pass directly through the body. The outlet port is at right angles to the inlet. This then allows units to be 'Quikclamped' together in a bank meaning numerous regulated pressures can be obtained from a single supply – see illustration.

R72M pressure regulators are ideal for control cabinet installations where neat, compact assemblies are required. See pages 453 and 454 for part number details for Quikclamp connectors and page 486 for pressure gauges.

