



Excelon modular system Accessories

Soft start valve

Series	Port size	Flow (CV)	Model
72	G1/4	1,35	P72E-2GN-NNN
72	G3/8	1,35	P72E-3GN-NNN
74	*	40	P74E-NNN-NNN

*Ports are unthreaded. Quikclamps (this page) and Quikmount pipe adaptors (page 455) are required.

Controls the rate of downstream pressure build-up at system start up

High flow

Cushioned poppets for long life



Shut-off valves

Series	Port size	Model 2/2	Model 3/2
72	G1/4	T72B-2GA-P1N	T72T-2GA-PIN
72	G3/8	T72B-3GA-P1N	T72T-3GA-PIN
73	G1/4	T73B-2GA-P1N	T73T-2GA-PIN
73	G3/8	T73B-3GA-P1N	T73T-3GA-PIN
73	G1/2	T73B-4GA-P1N	T73T-4GA-PIN
74	G3/8	T74B-3GA-P1N	T74T-3GA-PIN
74	G1/2	T74B-4GA-P1N	T74T-4GA-PIN
74	G3/4	T74B-6GA-P1N	T74T-6GA-PIN

Ideal for isolating sub-systems not in use

Easy to operate – low stiction

Lockable in the 'closed' position



Solenoid operated control valves

Series	Port size	Function	Type	Model
72	G1/4	3/2 NC	Solenoid	P72C-2GC-PFN
72	G1/4	3/2 NC	Pilot	P72C-2GA-NNN
72	G3/8	3/2 NC	Solenoid	P72C-3GC-PFN
72	G3/8	3/2 NC	Pilot	P72C-3GA-NNN
74	*	2/2 NC	Solenoid	P74A-NGC-PFN
74	*	2/2 NO	Solenoid	P74B-NGC-PFN
74	*	3/2 NC	Solenoid	P74C-NGC-PFN
74	*	3/2 NC	Solenoid with lockout	P74C-NGD-PFN
74	*	2/2 NC	Pilot	P74A-NGA-NNN
74	*	2/2 NO	Pilot	P74B-NGA-NNN
74	*	3/2 NC	Pilot	P74C-NGA-NNN

*Ports are unthreaded. Quikclamps (this page) and Quikmount pipe adaptors (page 455) are required.
Solenoid models are fitted with 24 V d.c., 2 W coils – no connector plugs, see page 382

3 port and 2 port, normally closed or normally open versions.

High flow, spring return.

Solenoid or air pilot operated.

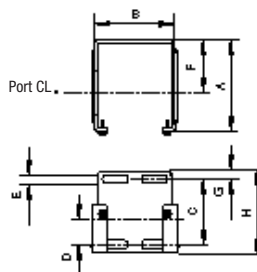


Wall mounting bracket

Series	Model
72	4224-50
73	4424-50
74	4324-50
L74*	4324-51

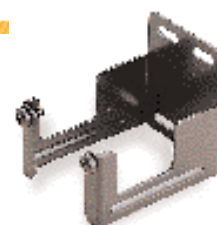
* with 1 litre bowl

Series	A	B	C	D	E	F	G	H
72	60	42	39	18,6	4	38	6	51
73	67	60	48	19	7	38	6	61
74	79	69	50	20	5	51	6	61



Provides secure wall mounting for individual Excelon products*

*Except P72, P74, T73 and T74 units.



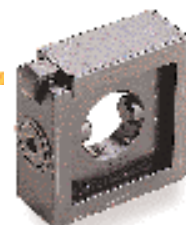
Quikclamp

Series	Model
72	4214-51
73 & 74	4314-51

Allows easy connection of one Excelon unit to another

One piece – no loose parts

Uniquely, connected products can be rotated in 90° increments



Excelon modular system

Accessories

Quikclamps and wall brackets

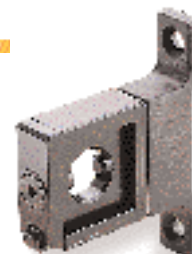
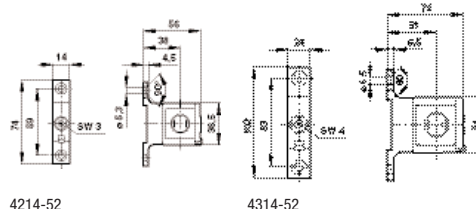
Series	Model
72	4214-52
73 & 74	4314-52

Allows easy connection of one Excelon unit to another

One piece – no loose parts

Uniquely, connected products can be rotated in 90° increments

Secure mounting to a wall, panel or machine surface

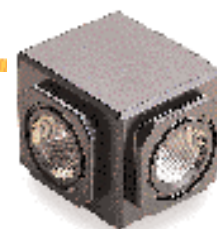


Manifold block

Series	Model
72	4228-03
73 & 74	4328-53

Provides a manifold capability for up to 3 products, e.g. 3 pressure regulators can be mounted on one block to provide 3 different secondary pressures from a common primary pressure

Ideal for right-angled piping



Porting block

Series	Model
72	4216-52
73 & 74	4316-51

Provides 3 G1/4 auxiliary air outlets

Ideal for branching off to smaller sub-systems

When placed between a filter-regulator and lubricator allows branching off to systems requiring a non-lubricated supply



Service life indicator

Series	Type	Model
72, 73, 74	Electrical	4020-51R
72, 73, 74	Visual	5797-50

4020-51R provides an electrical output on detecting an excessive pressure drop across a filter element

5797-50 provides a visual indication



Neck mounting bracket

Series	Model
72	74316-50
73	4461-50
74	4368-51

Provides secure wall mounting for individual pressure regulators, filter-regulators and pressure relief valves

Includes panel nut



Panel nut

Series	Model
72	4248-89
73	5191-88
74	4348-89

Used to panel mount pressure regulators, filter-regulators and pressure relief valves

