

# Mechanically & Manually Actuated



## T-Lockouts

- Fully isolates supply pressure
- Lockable
- Rapid exhaust
- Ideal for isolating supply lines during maintenance & servicing
- High flow

- > 3/2 way  
Port size: G1/2, G3/4, G1, 1/2", 3/4" or 1" PTF
- > Lockable only in the "off" position
- > Clear visual indication when in the "on" position
- > High exhaust flow
- > Helps you to comply to OSHA regulation  
29 CFR 1910.147 - The control of hazardous energy (lockout/tagout)



### Technical features

#### Medium:

Compressed air

#### Operation:

Inline lockout valve

#### Operating pressure:

0 ... 20 bar (0 ... 290 psi)

#### Port size:

G1/2, G3/4 or G1  
1/2", 3/4" or 1" PTF

#### Mounting position:

Optional

#### Ambient/Media temperature:

-30 ... +80°C (-22 ... +176°F)

Air supply must be dry enough to avoid ice formation at temperatures below +2°C (35°F).

#### Materials:

Valve body: Aluminum

Silencer base: Zinc

Spool, T-Handle, silencer shell: Aluminum

Spring detent: Stainless steel

Elastomers: NBR and PUR

### Technical data

#### Standard models with silencer

Symbol	Basic size	Port size	Flow 1 » 2 (l/min)	2 » 3 (l/min)	Handle colour	Weight		Model
						(kg)	(lbs)	
	1/2"	G1/2	8200	6970	Red	0,95	2	CR043C
		1/2" PTF	8200	6970	Black	0,95	2	C0023C
		G3/4	11120	7590	Red	0,92	2	CR043D
		3/4" PTF	11120	7590	Black	0,92	2	C0023D
	1"	G1	14300	8120	Red	1,88	4.1	CR044B
		1" PTF	14300	8120	Black	1,88	4.1	C0024B

### Option selector

C★0★★★★

Handle colour	Substitute
Red	R
Black	0
Thread form	Substitute
PTF	2
ISO G	4
Base size	Substitute
1/2"	3
1"	4

Port size	Substitute
1/2" (1/2" base size)	C
3/4" (1/2" base size)	D
1" (1" base size)	B

## Accessories

	Replacement silencer	Lockout hasp	Padlock with two keys
<b>Base size</b>			
1/2"	ML004F	54547-01	0613633 (brass)
1"	ML008F		

## Repair kits

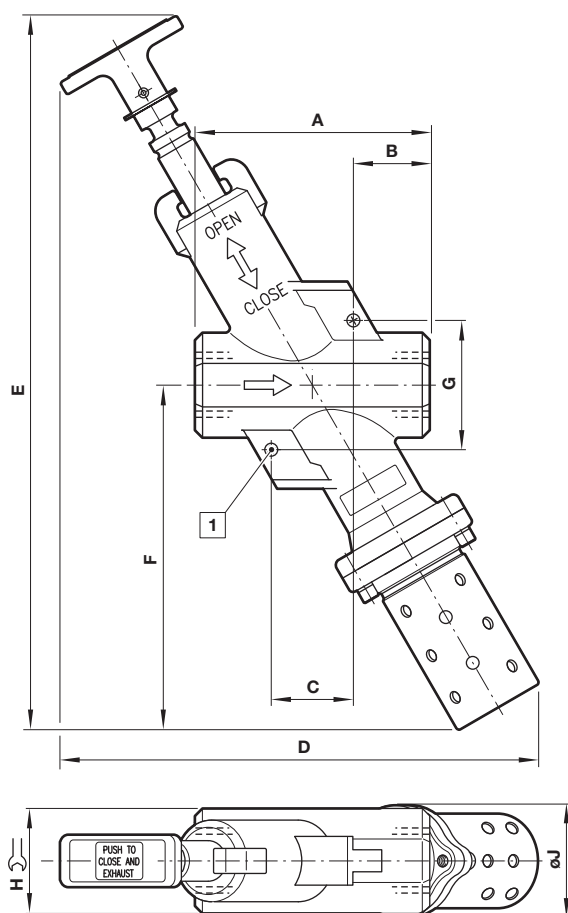
### Repair kits



53474-43 (NBR - 1/2" base size)

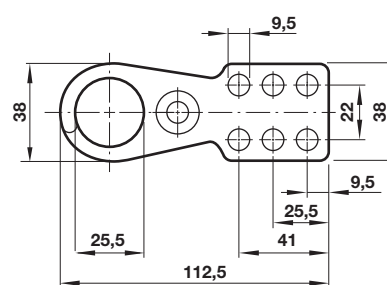
53475-34 (NBR - 1" base size)

## Drawings

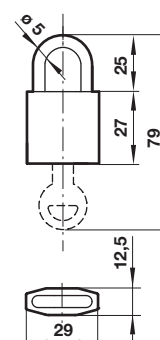


### Lockout hasp

Dimensions in mm  
Projection/First angle



### Padlock



1 Hole dia 7 mm

Basic size	A	B	C	D	E	F	G	H	J
1/2"	102	35	32	202	299	136	57	48	48
1"	127 (131)	41 (43)	44	266	399	198	77	57	54

( ) = values for PTF version

## Warning

These products are intended for use in industrial compressed air systems only. Do not use these products where pressures and temperatures can exceed those listed under »Technical features/data«.

Before using these products with fluids other than those specified, for non-industrial applications, life-support systems or other applications not within published specifications, consult IMI NORGRN.

Through misuse, age, or malfunction, components used in fluid power systems can fail in various modes.

The system designer is warned to consider the failure modes of all component parts used in fluid power systems and to provide adequate safeguards to prevent personal injury or damage to equipment in the event of such failure.

System designers must provide a warning to end users in the system instructional manual if protection against a failure mode cannot be adequately provided.

System designers and end users are cautioned to review specific warnings found in instruction sheets packed and shipped with these products.